



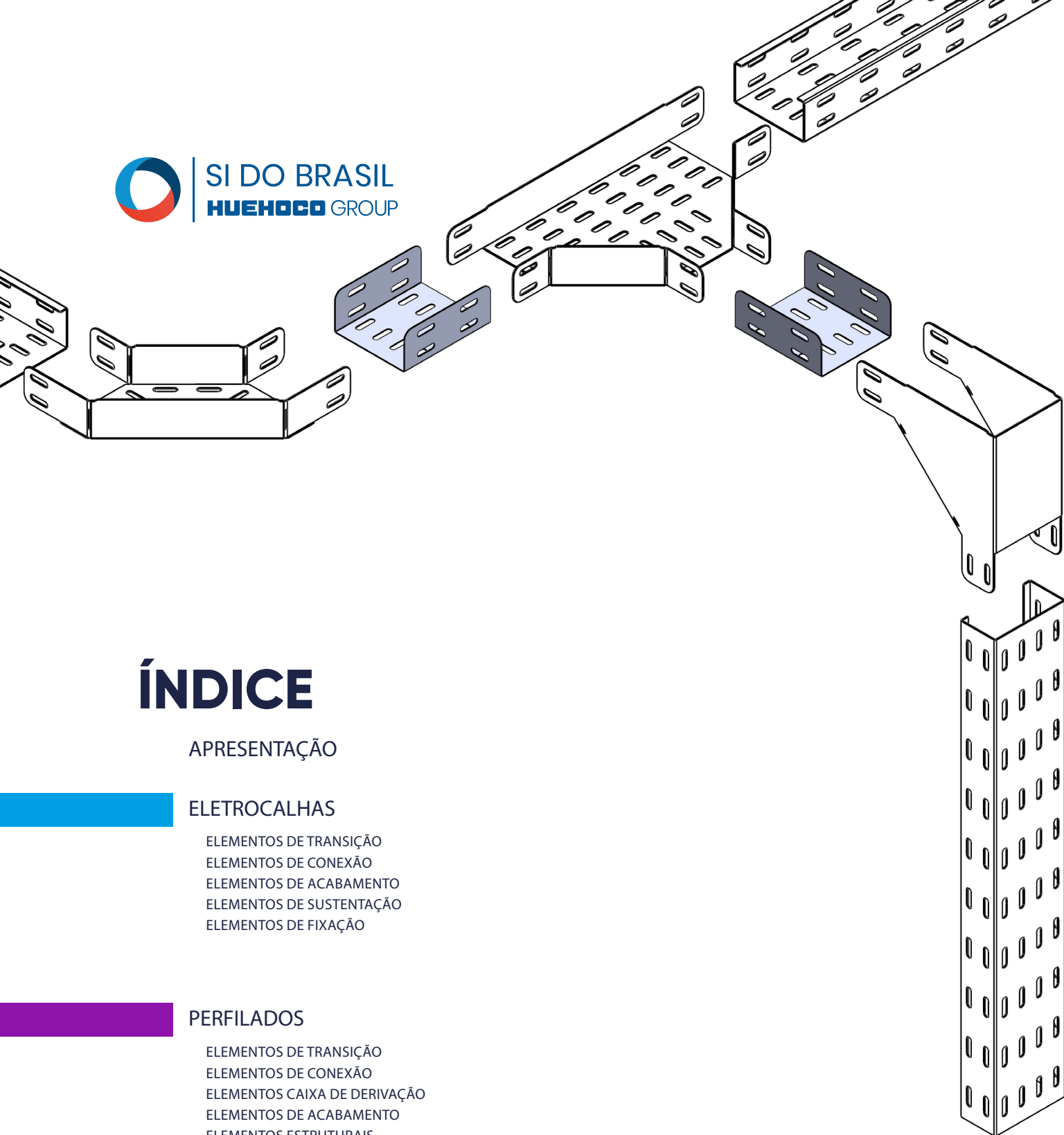
# CATÁLOGO TÉCNICO



SI DO BRASIL  
**HUEHOCO** GROUP



SI DO BRASIL  
HUEHOCO GROUP



# ÍNDICE

## APRESENTAÇÃO

### ELETROCALHAS

- ELEMENTOS DE TRANSIÇÃO
- ELEMENTOS DE CONEXÃO
- ELEMENTOS DE ACABAMENTO
- ELEMENTOS DE SUSTENTAÇÃO
- ELEMENTOS DE FIXAÇÃO

### PERFILADOS

- ELEMENTOS DE TRANSIÇÃO
- ELEMENTOS DE CONEXÃO
- ELEMENTOS CAIXA DE DERIVAÇÃO
- ELEMENTOS DE ACABAMENTO
- ELEMENTOS ESTRUTURAIIS
- ELEMENTOS DE SUSTENTAÇÃO
- ELEMENTOS DE FIXAÇÃO

### FIXADORES



**Máquina de corte a laser  
de 6.000W com mesa dupla  
para máxima eficiência!**

# APRESENTAÇÃO

Criada em 2017 para suprir as necessidades iniciais do mercado automotivo, a Soluções Industriais do Brasil (SIB), rapidamente expandiu suas operações além desse setor, abraçando também os mercados de energia renovável e construção civil.

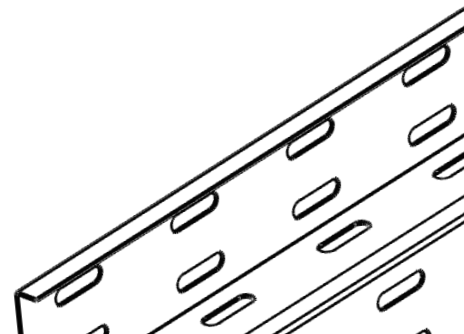
Localizada estrategicamente em Nova Odessa - SP, dentro do condomínio empresarial do Grupo HUEHOCO, a SIB possui uma infraestrutura de **2.800 m<sup>2</sup>**, facilitando a logística e o acesso às principais rodovias.

Com uma abordagem inovadora e investimento em tecnologia de ponta, a SIB possui expertise em estamparia metálica, oferecendo precisão e qualidade.

Destaca-se também pelo uso de tecnologia para tratar processos como rebarbação, limpeza e secagem das peças, resultando em uma resistência à oxidação prolongada, especialmente para o aço de baixo carbono, sem a necessidade de lixamento.

Assim, a Soluções Industriais do Brasil se destaca como uma parceira confiável e inovadora, comprometida em impulsionar o crescimento e a excelência em diversos setores industriais.

Nosso diferencial vai além: somos respaldados pela HUEHOCO, empresa do grupo, detentora de tecnologia de ponta no mercado de pintura coil coating. Com essa tecnologia e utilizando produtos da mais alta qualidade, os processos de estampo, corte e dobra, podem ser executados, sem danificar a pintura, assegurando aparência e resistência excepcionais, além da durabilidade de cada peça fabricada!





# ELETROCALHAS

As eletrocalhas da SI do Brasil são resistentes, fáceis de instalar e com ótimo acabamento para a condução de fios e cabos do seu projeto.

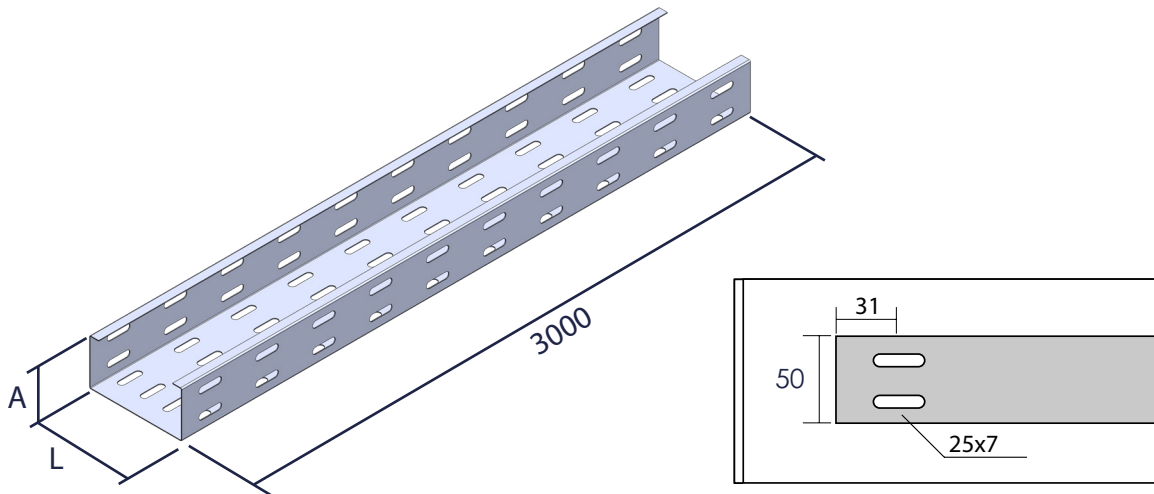
Cada componente é projetado e desenhado em software 3D.

Matéria prima resistente de aço carbono (SAE 1008 ou 1010), ou inox (AISI 304).

Corte a laser garantindo qualidade, precisão, acabamento fino e sem rebarbas.

Dobras feitas em máquina CNC assegurando peças com encaixes perfeitos.

São várias opções de proteção superficial para melhor lhe atender.



Como especificar: 1.100 / 100 / 50 / 3000 / PZ  
 Modelo / Largura / Altura / Comprimento / Acabamento

Exemplo acima é: eletrocalha perfurada com virola, largura de 100mm, altura de 50mm, comprimento de 3000mm e acabamento superficial pré zincado.

Dimensões:

Altura (mm)	Largura (mm)															
	50	75	100	125	150	200	250	300	350	400	450	500	550	600	700	800
50	✓	✓	✓	✓	✓	✓	✓	✓	✓	✓	✓	✓	✓	✓	✓	✓
75		✓	✓	✓	✓	✓	✓	✓	✓	✓	✓	✓	✓	✓	✓	✓
100			✓	✓	✓	✓	✓	✓	✓	✓	✓	✓	✓	✓	✓	✓
125				✓	✓	✓	✓	✓	✓	✓	✓	✓	✓	✓	✓	✓
150					✓	✓	✓	✓	✓	✓	✓	✓	✓	✓	✓	✓
200						✓	✓	✓	✓	✓	✓	✓	✓	✓	✓	✓

\*Comprimento padrão de 3000mm.

Obs.: outros comprimentos sob consulta.

Acabamentos:

PZ Pré zincado.

PP Pré pintado.

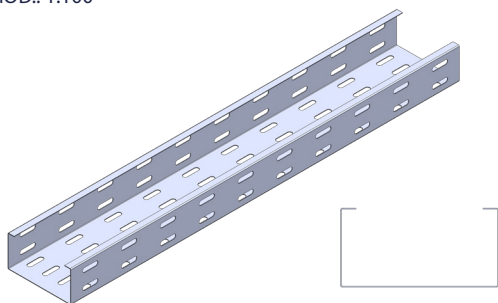
GF Galvanizado a fogo.

GE Galvanizado eletrolítico.

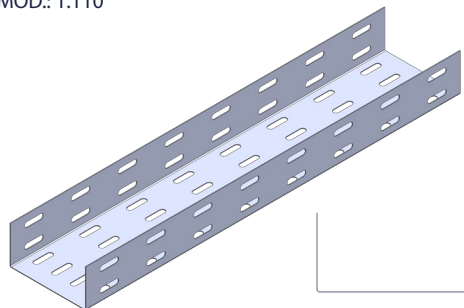
AI Aço inox AISI 304 ou AISI 316 sob consulta.

# ELETROCALHA

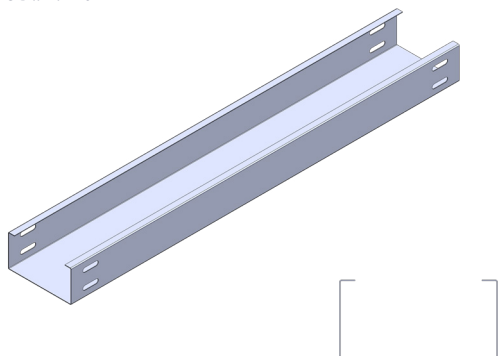
ELETROCALHA PERFURADA COM VIROLA  
MOD.: 1.100



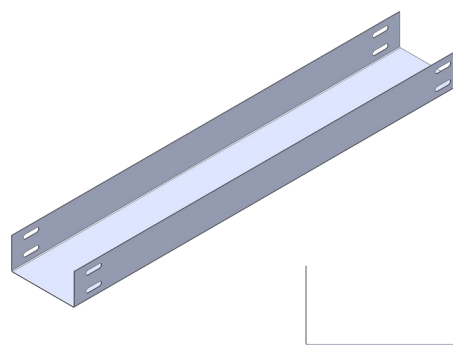
ELETROCALHA PERFURADA SEM VIROLA  
MOD.: 1.110



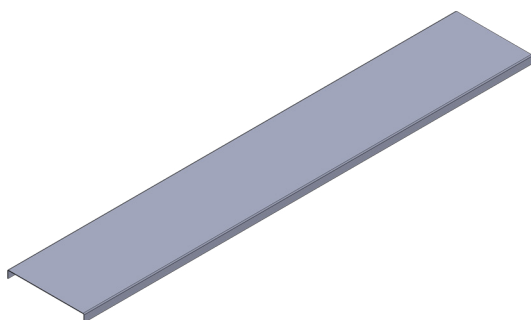
ELETROCALHA LISA COM VIROLA  
MOD.: 1.120



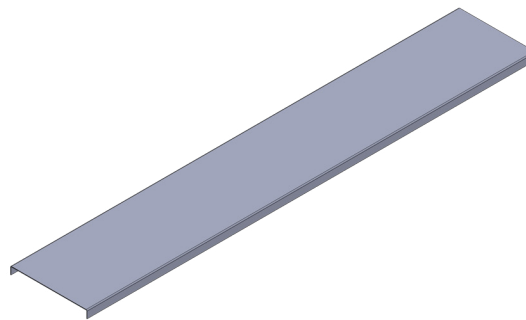
ELETROCALHA LISA SEM VIROLA  
MOD.: 1.130



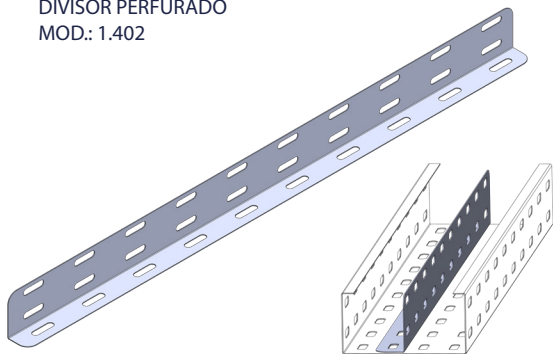
TAMPA DE ENCAIXE PARA ELETROCALHA  
MOD.: 1.400



TAMPA DE PRESSÃO PARA ELETROCALHA  
MOD.: 1.401

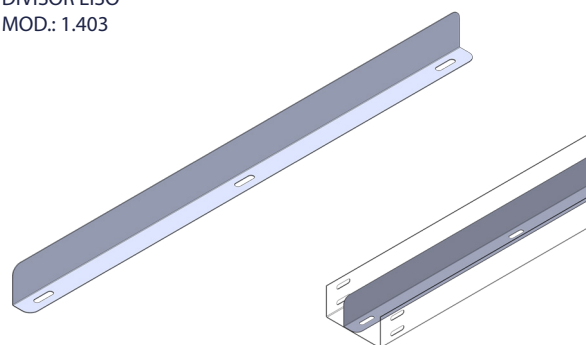


DIVISOR PERFURADO  
MOD.: 1.402



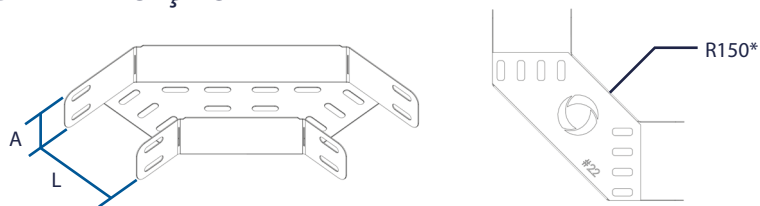
Para fixação, utilizar os furos da eletrocalha perfurada.

DIVISOR LISO  
MOD.: 1.403



Obs.: para utilização de divisores em eletrocalhas lisas, o cliente deve fazer os furos de fixação.

# ELEMENTOS DE TRANSIÇÃO



Como especificar: 1.100 / 1.200 / 100 / 50 / R150 / PZ  
 Modelo da eletrocalha / Modelo do acessório / Largura / Altura / Raio / Acabamento

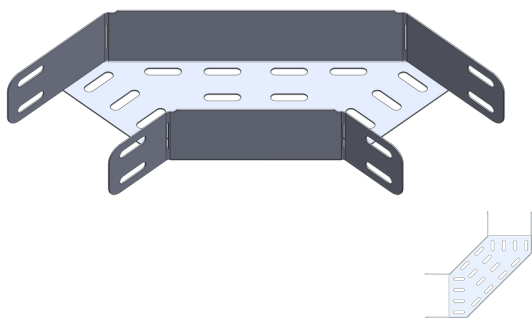
\*Raio padrão de 150mm.

\*\*Bitola padrão de #22 para larguras de até 200mm.

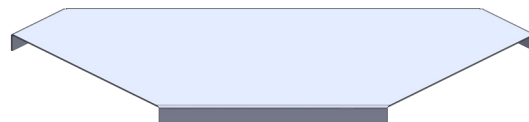
\*\*Bitola padrão de #20 para larguras acima de 200mm.

Outras espessuras sob consulta.

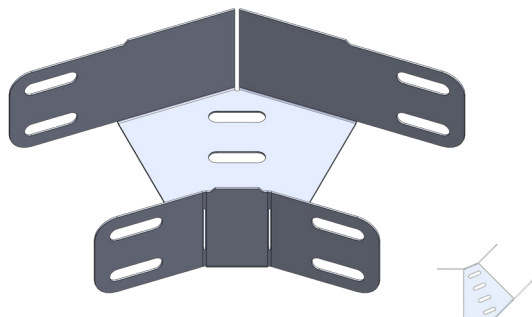
CURVA HORIZONTAL 90°  
MOD.: 1.200



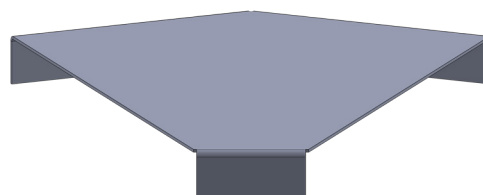
TAMPA DE CURVA HORIZONTAL 90°  
MOD.: 1.404



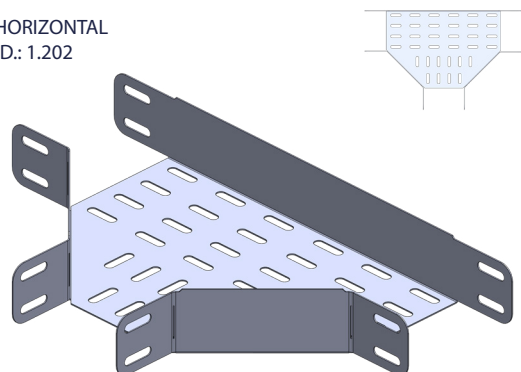
CURVA HORIZONTAL 45°  
MOD.: 1.201



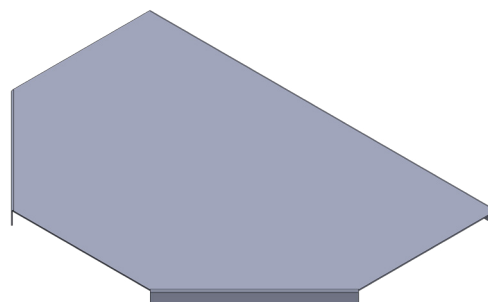
TAMPA DE CURVA HORIZONTAL 45°  
MOD.: 1.405



TE HORIZONTAL  
MOD.: 1.202



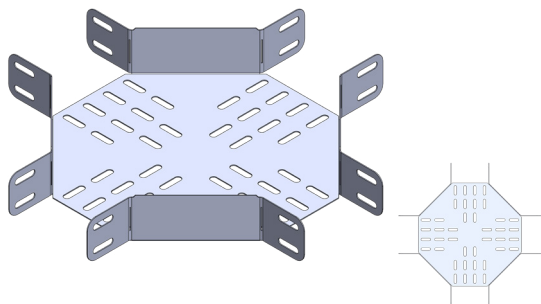
TAMPA DE TE HORIZONTAL  
MOD.: 1.406



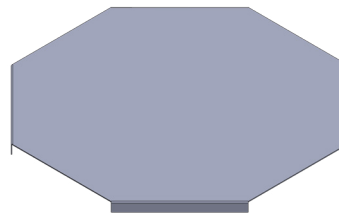


# ELEMENTOS DE TRANSIÇÃO

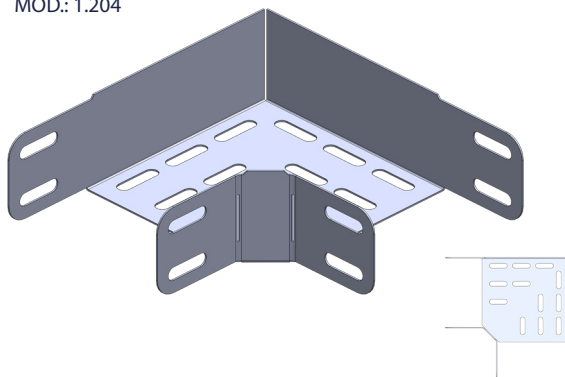
CRUZETA HORIZONTAL  
MOD.: 1.203



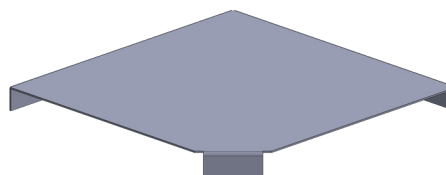
TAMPA DE CRUZETA HORIZONTAL  
MOD.: 1.407



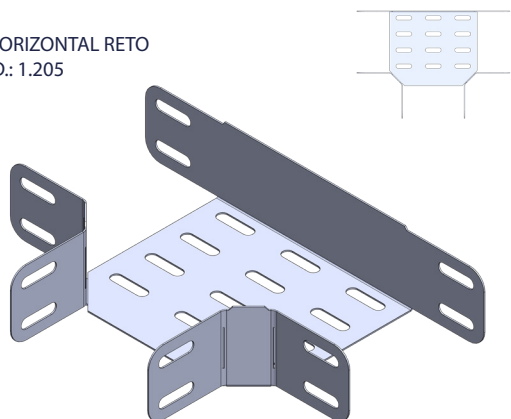
COTOVELO RETO  
MOD.: 1.204



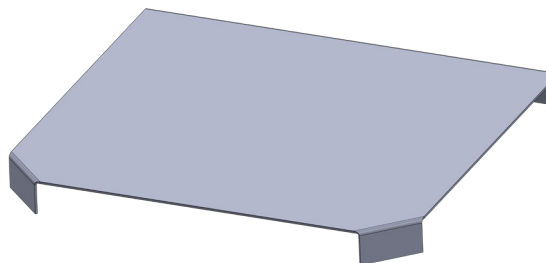
TAMPA DE COTOVELO RETO  
MOD.: 1.408



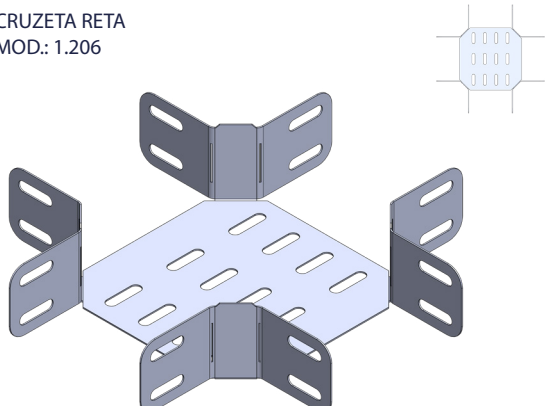
TE HORIZONTAL RETO  
MOD.: 1.205



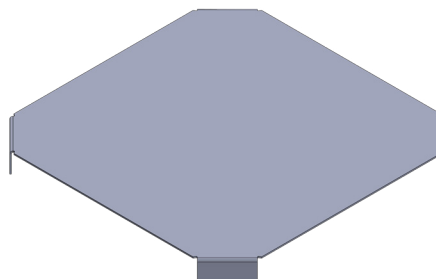
TAMPA DE TE HORIZONTAL RETO  
MOD.: 1.409



CRUZETA RETA  
MOD.: 1.206

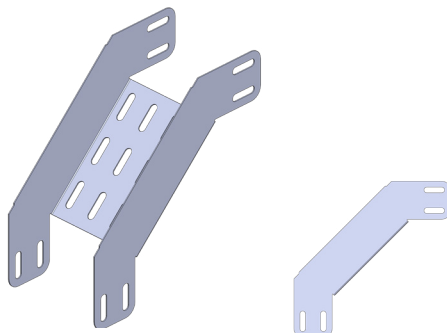


TAMPA DE CRUZETA RETA  
MOD.: 1.410

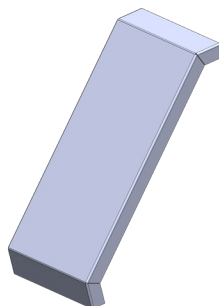


# ELEMENTOS DE TRANSIÇÃO

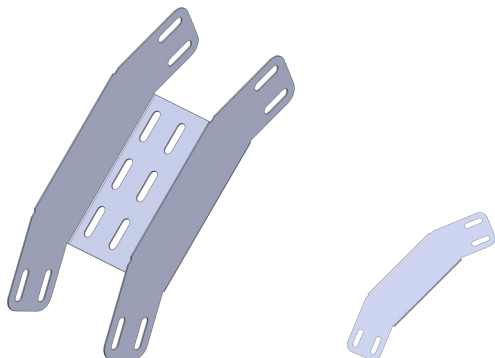
CURVA VERTICAL EXTERNA 90°  
MOD.: 1.207



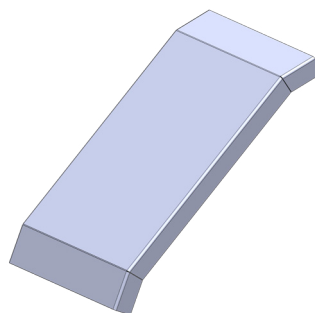
TAMPA DE CURVA VERTICAL EXTERNA 90°  
MOD.: 1.411



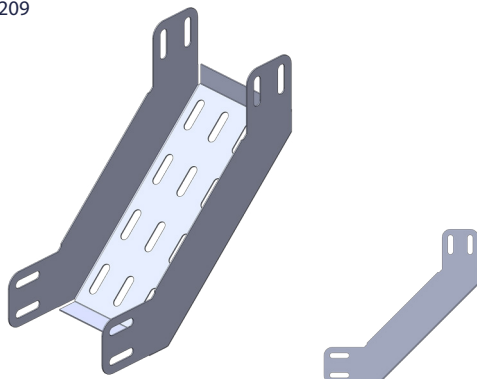
CURVA VERTICAL EXTERNA 45°  
MOD.: 1.208



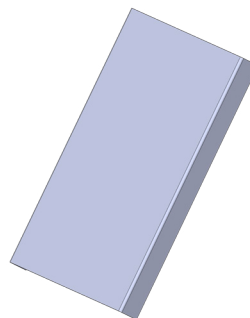
TAMPA DE CURVA VERTICAL EXTERNA 45°  
MOD.: 1.412



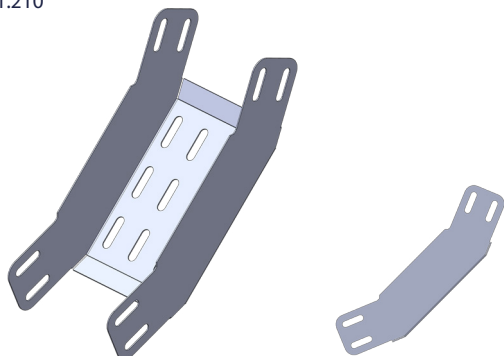
CURVA VERTICAL INTERNA 90°  
MOD.: 1.209



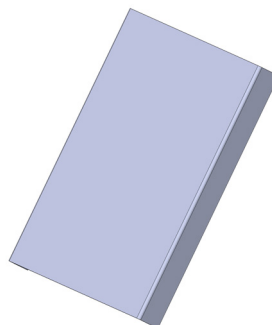
TAMPA DE CURVA VERTICAL INTERNA 90°  
MOD.: 1.413



CURVA VERTICAL INTERNA 45°  
MOD.: 1.210

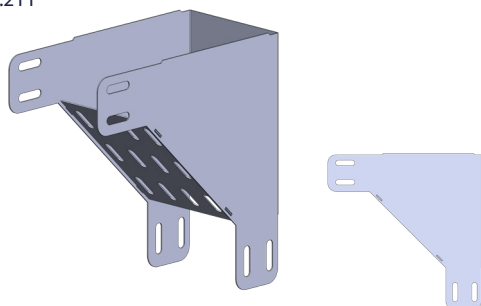


TAMPA DE CURVA VERTICAL INTERNA 45°  
MOD.: 1.414

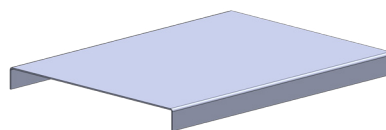


## ELEMENTOS DE TRANSIÇÃO

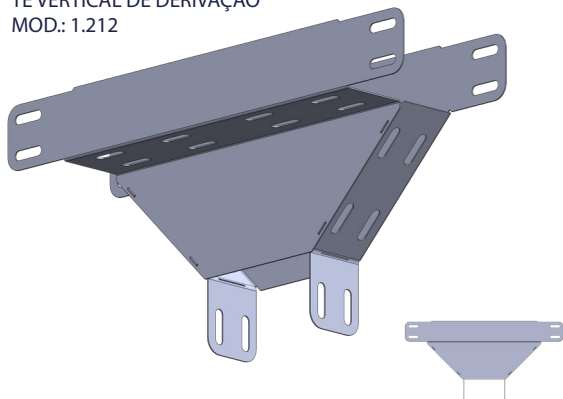
CURVA DE INVERSÃO  
MOD.: 1.211



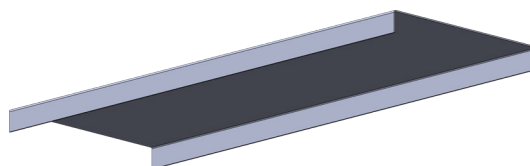
TAMPA DE CURVA DE INVERSÃO  
MOD.: 1.415



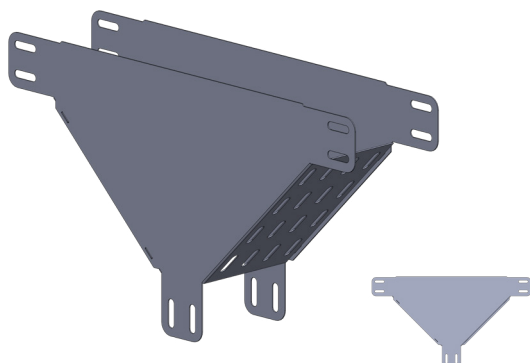
TE VERTICAL DE DERIVAÇÃO  
MOD.: 1.212



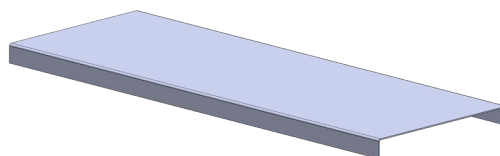
TAMPA DE TE VERTICAL DE DERIVAÇÃO  
MOD.: 1.416



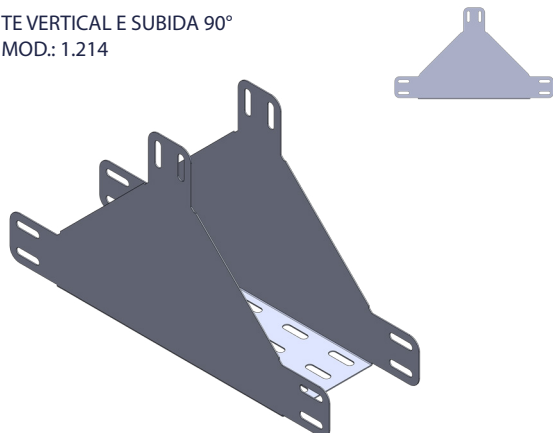
TE VERTICAL DE DESCIDA 90°  
MOD.: 1.213



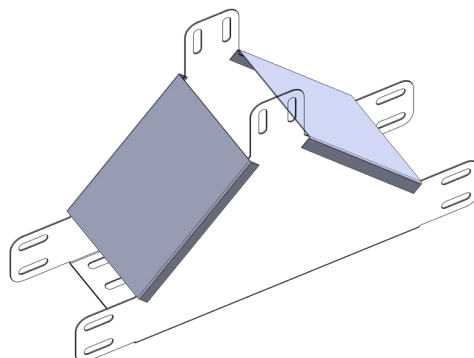
TAMPA DE TE VERTICAL DE DESCIDA 90°  
MOD.: 1.417



TE VERTICAL E SUBIDA 90°  
MOD.: 1.214



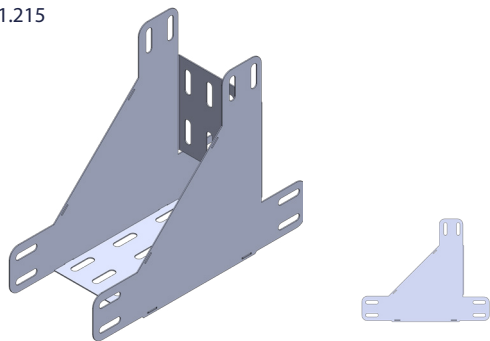
TAMPA DE TE VERTICAL E SUBIDA 90°  
MOD.: 1.418



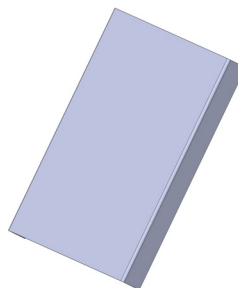
Tampas disponíveis em conjuntos de 2 peças.

# ELEMENTOS DE TRANSIÇÃO

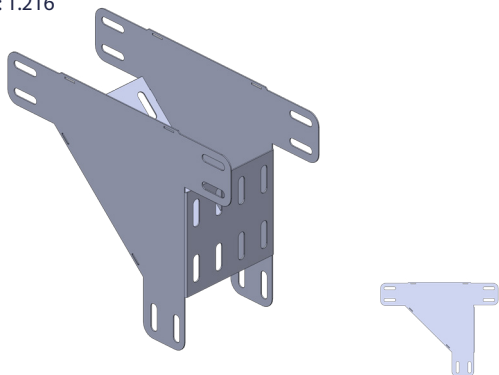
CURVA COM PASSAGEM RETA DE SUBIDA  
MOD.: 1.215



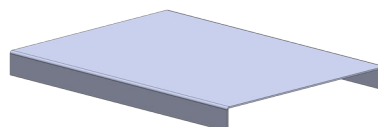
TAMPA DE CURVA PASSAGEM RETA DE SUBIDA  
MOD.: 1.419



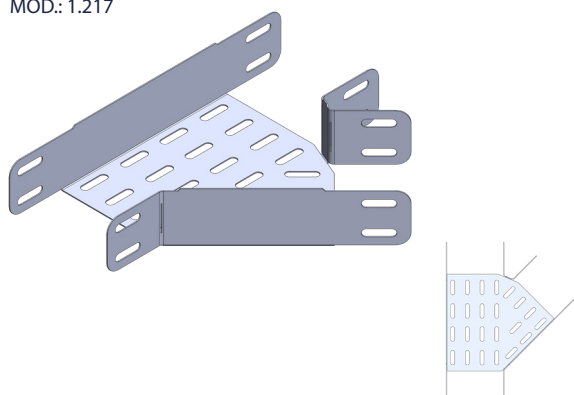
CURVA COM PASSAGEM RETA DE DESCIDA  
MOD.: 1.216



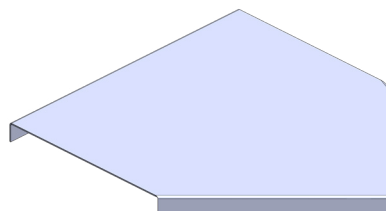
TAMPA CURVA PASSAGEM RETA DE DESCIDA  
MOD.: 1.420



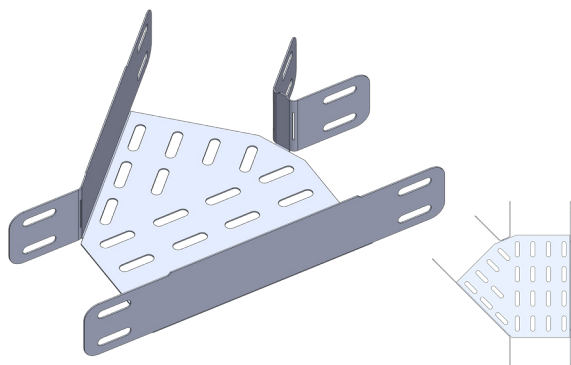
JUNÇÃO A DIREITA 45°  
MOD.: 1.217



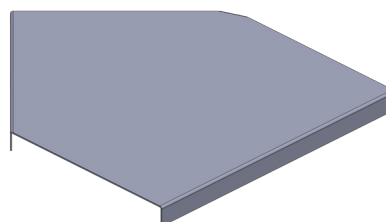
TAMPA DE JUNÇÃO A DIREITA 45°  
MOD.: 1.421



JUNÇÃO A ESQUERDA 45°  
MOD.: 1.218

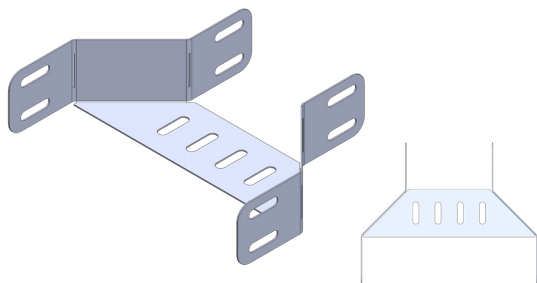


TAMPA DE JUNÇÃO A ESQUERDA 45°  
MOD.: 1.422



## ELEMENTOS DE TRANSIÇÃO

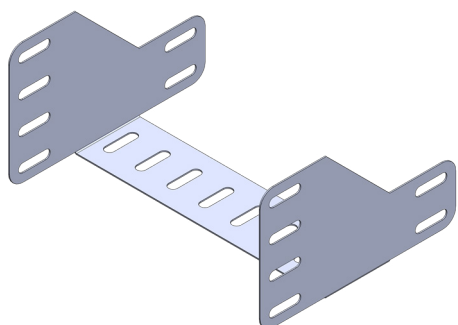
REDUÇÃO CONCÊNTRICA NA LARGURA  
MOD.: 1.219



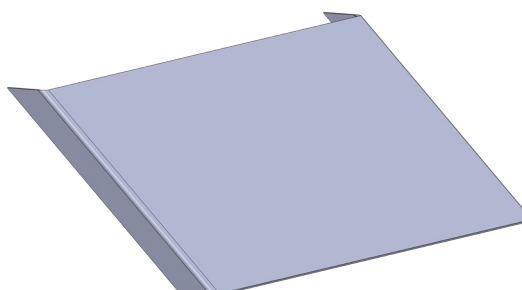
TAMPA DE REDUÇÃO CONCÊNTRICA LARGURA  
MOD.: 1.423



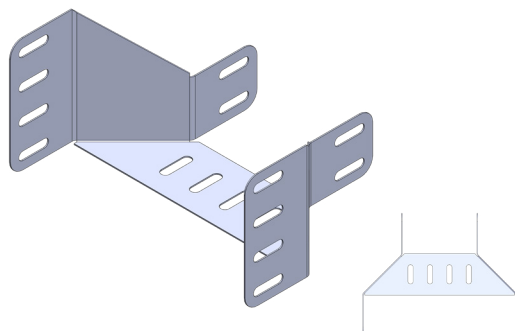
REDUÇÃO CONCÊNTRICA NA ALTURA  
MOD.: 1.220



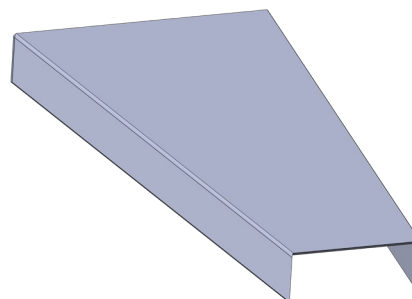
TAMPA DE REDUÇÃO CONCÊNTRICA NA ALTURA  
MOD.: 1.424



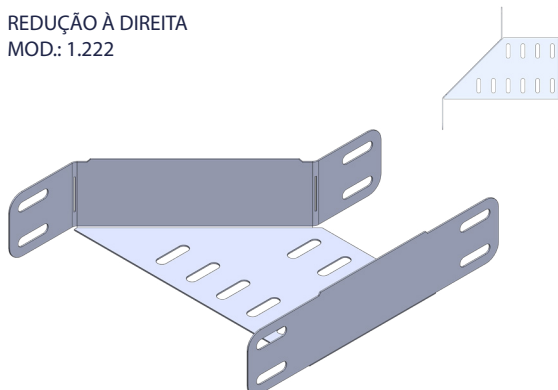
REDUÇÃO CONCÊNTRICA NA ALTURA E LARGURA  
MOD.: 1.221



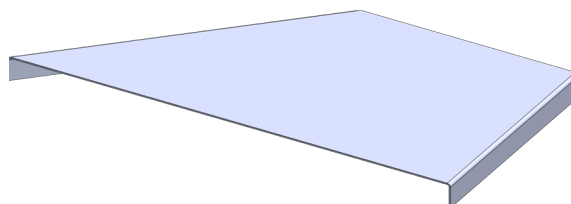
TAMPA REDUÇÃO CONCÊNTRICA ALTURA LARGURA  
MOD.: 1.425



REDUÇÃO À DIREITA  
MOD.: 1.222

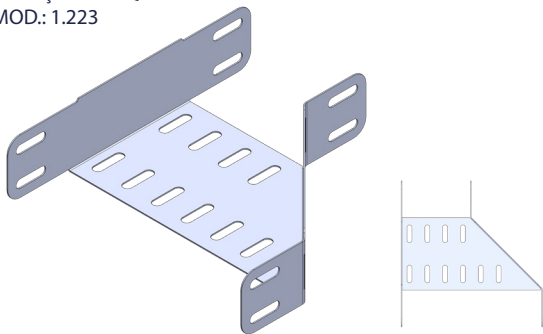


TAMPA DE REDUÇÃO À DIREITA  
MOD.: 1.426

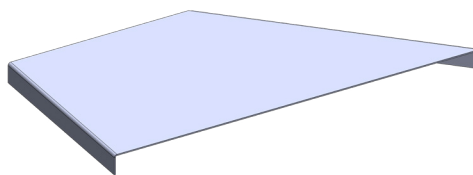


# ELEMENTOS DE TRANSIÇÃO

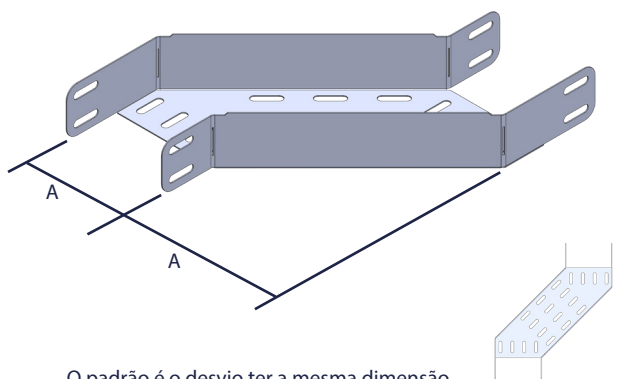
REDUÇÃO À ESQUERDA  
MOD.: 1.223



TAMPA DE REDUÇÃO À ESQUERDA  
MOD.: 1.427

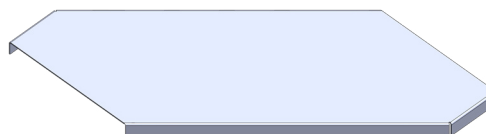


DESVIO À DIREITA 45°  
MOD.: 1.224

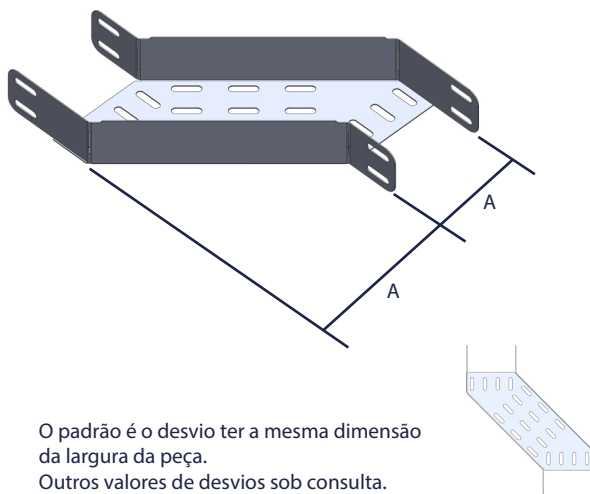


O padrão é o desvio ter a mesma dimensão da largura da peça.  
Outros valores de desvios sob consulta.

TAMPA DE DESVIO À DIREITA 45°  
MOD.: 1.428

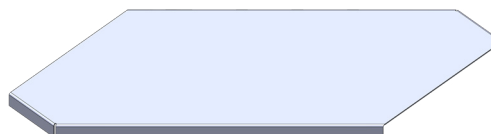


DESVIO À ESQUERDA 45°  
MOD.: 1.225



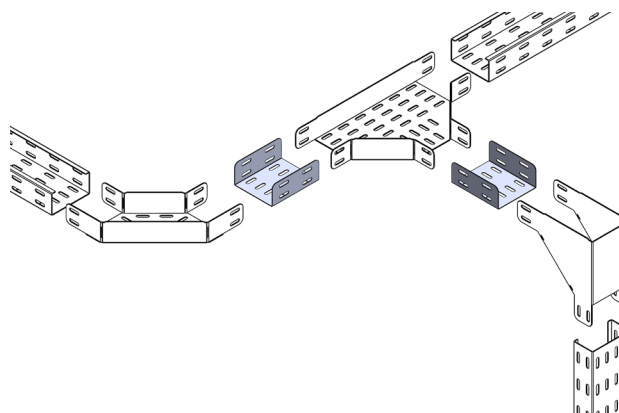
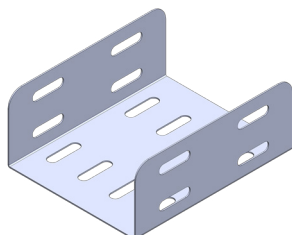
O padrão é o desvio ter a mesma dimensão da largura da peça.  
Outros valores de desvios sob consulta.

TAMPA DE DESVIO À ESQUERDA 45°  
MOD.: 1.429

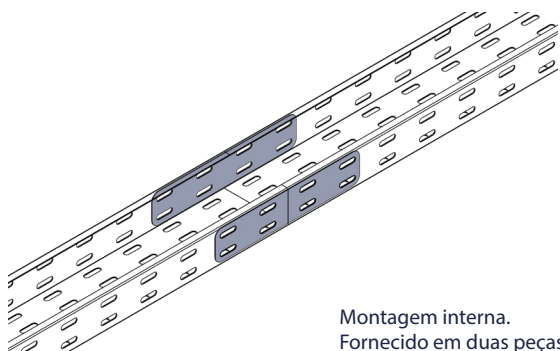


# ELEMENTOS DE CONEXÃO

SEGMENTO PARA ACESSÓRIOS  
MOD.: 1.300

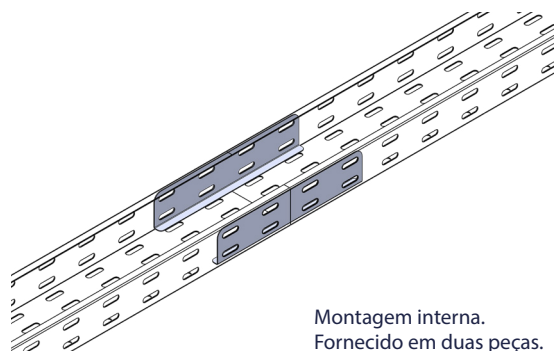


TALA LONGA  
MOD.: 1.301



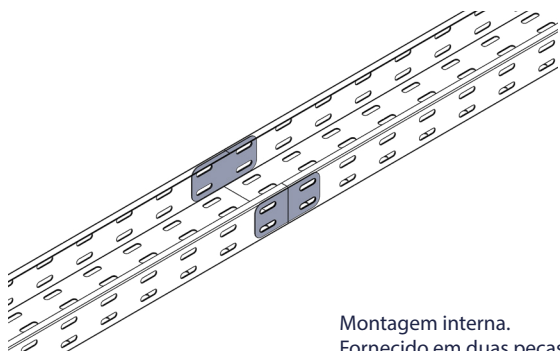
Montagem interna.  
Fornecido em duas peças.

TALA LONGA REFORÇADA  
MOD.: 1.302



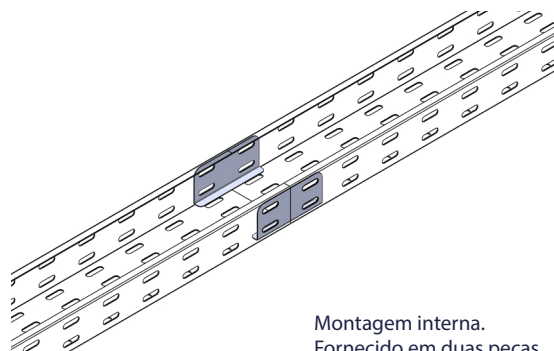
Montagem interna.  
Fornecido em duas peças.

TALA CURTA  
MOD.: 1.303



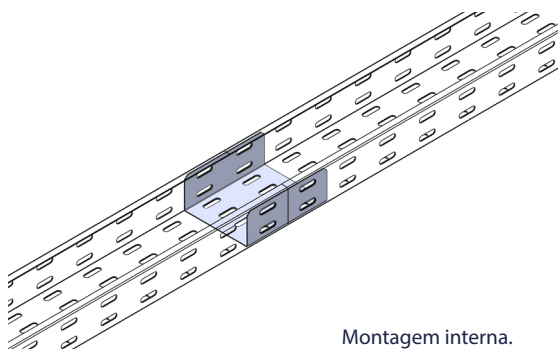
Montagem interna.  
Fornecido em duas peças.

TALA CURTA REFORÇADA  
MOD.: 1.304



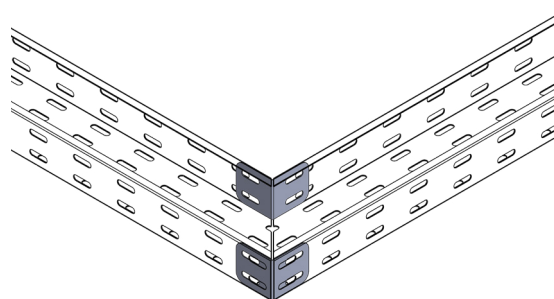
Montagem interna.  
Fornecido em duas peças.

EMENDA INTERNA  
MOD.: 1.305



Montagem interna.

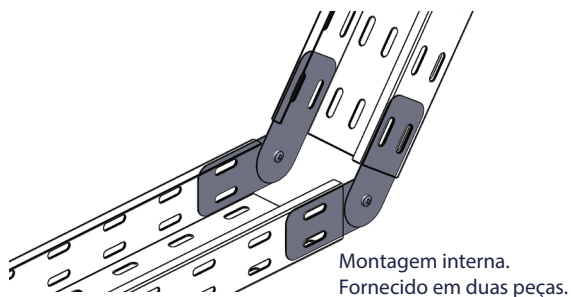
TALA HORIZONTAL 90°  
MOD.: 1.306



Montagem interna.  
Fornecido em duas peças.

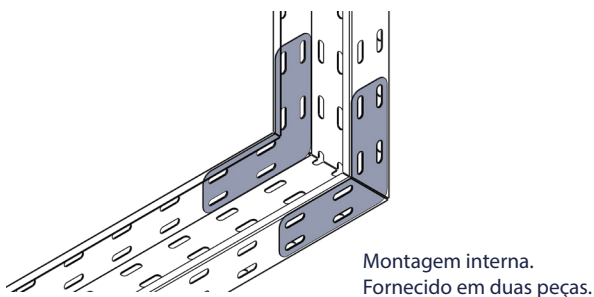
# ELEMENTOS DE CONEXÃO

TALA ARTICULADA  
MOD.: 1.307



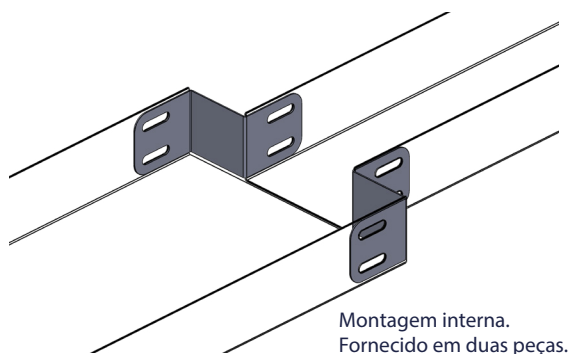
Montagem interna.  
Fornecido em duas peças.

TALA VERTICAL 90°  
MOD.: 1.308



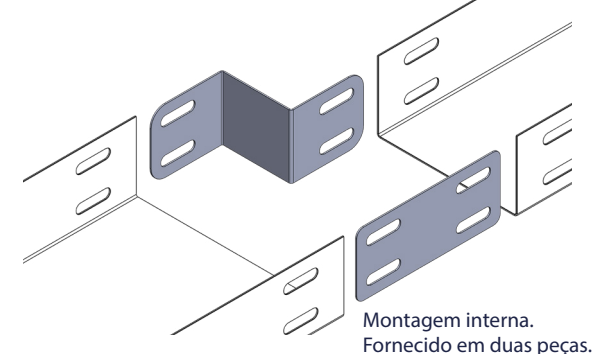
Montagem interna.  
Fornecido em duas peças.

REDUÇÃO CONCÊNTRICA  
MOD.: 1.309



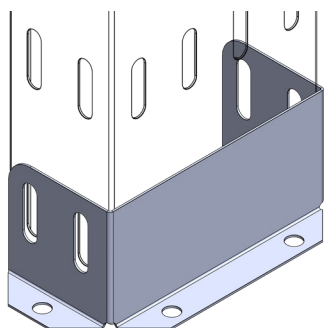
Montagem interna.  
Fornecido em duas peças.

REDUÇÃO EXCÊNTRICA  
MOD.: 1.310



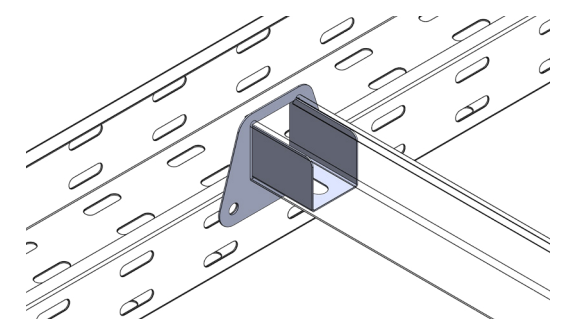
Montagem interna.  
Fornecido em duas peças.

FLANGE PARA PAINEL  
MOD.: 1.311



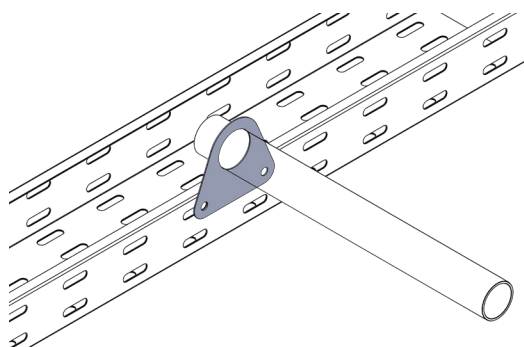
Montagem externa.

SAÍDA HORIZONTAL PARA PERFILADO  
MOD.: 1.312



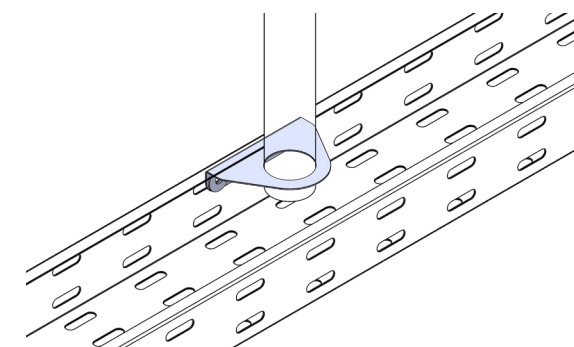
Disponível para perfilado de 38x38mm.

SAÍDA HORIZONTAL PARA ELETRODUTO  
MOD.: 1.313



Para uso de eletrodutos de 1/2", 3/4", 1", 1"1/4, 1"1/2, 2" e 2"1/2.

SAÍDA VERTICAL PARA ELETRODUTO  
MOD.: 1.314

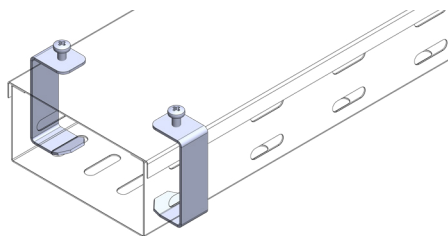


Para uso de eletrodutos de 1/2", 3/4", 1", 1"1/4, 1"1/2, 2" e 2"1/2.



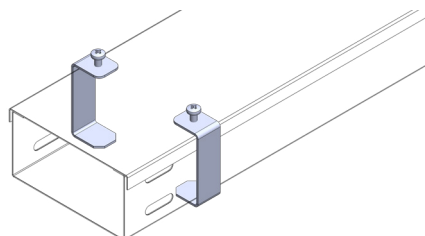
## ELEMENTOS DE ACABAMENTO

PRESILHA PARA ELETROCALHA PERFORADA  
MOD.: 1.430



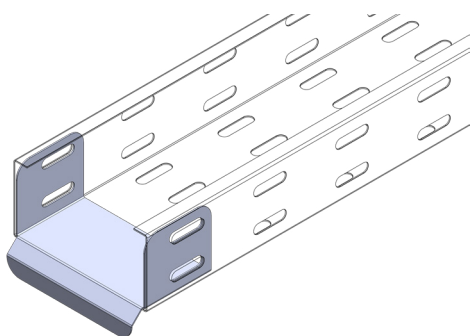
Para uso e encaixe em eletrocalhas perfuradas.  
Fornecimento de 2x peças.  
Acompanha parafusos para fixação.

PRESILHA PARA ELETROCALHA LISA  
MOD.: 1.431

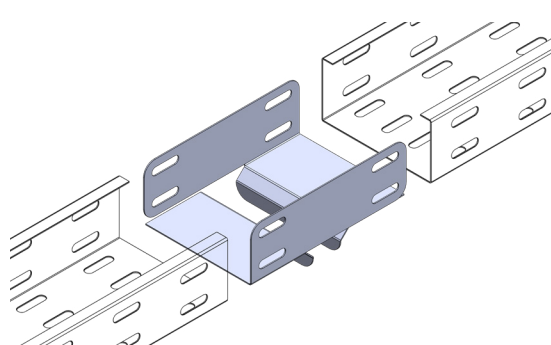


Para uso em eletrocalhas lisas.  
Fornecimento de 2x peças.  
Acompanha parafusos para fixação.

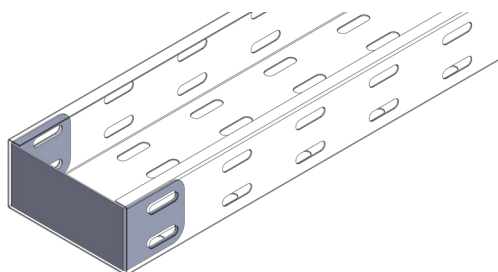
GOTEJADOR  
MOD.: 1.432



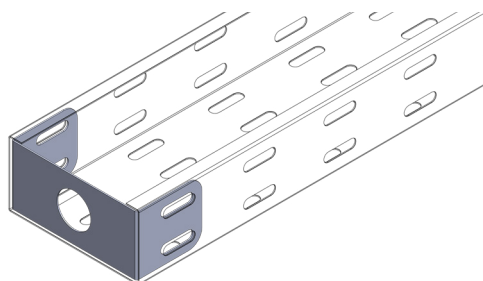
GOTEJADOR INTERMEDIÁRIO  
MOD.: 1.433



TERMINAL DE FECHAMENTO  
MOD.: 1.434

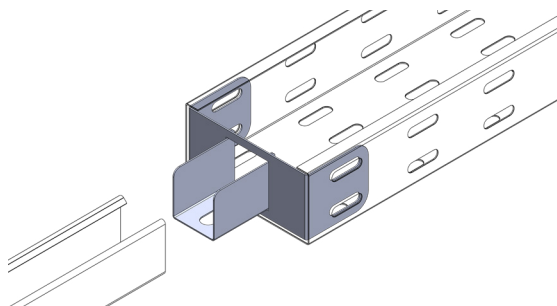


TERMINAL DE FECHAMENTO COM SAÍDA PARA ELETRODUTO  
MOD.: 1.435



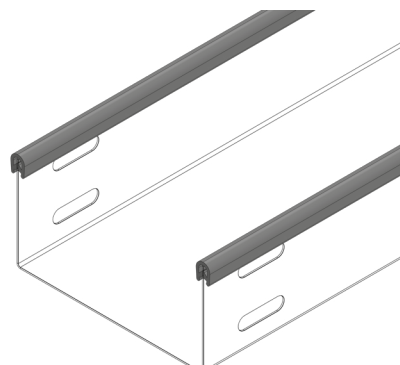
Para uso de eletrodutos de 1/2", 3/4", 1", 1"1/4, 1"1/2, 2" e 2"1/2.

TERMINAL FECHAMENTO COM SAÍDA PARA PERFILADO  
MOD.: 1.436



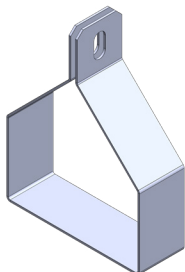
Para uso de perfilados de 38x38.

ACABAMENTO DE BORRACHA PARA ELETROCALHA  
MOD.: 1.437

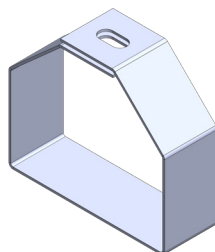


# ELEMENTOS DE SUSTENTAÇÃO

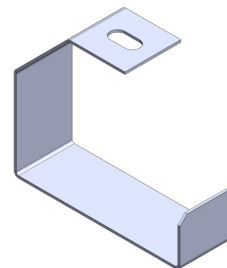
SUPORE HORIZONTAL  
MOD.: 9.001



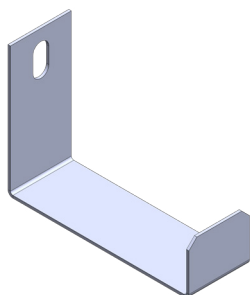
SUPORE VERTICAL  
MOD.: 9.002



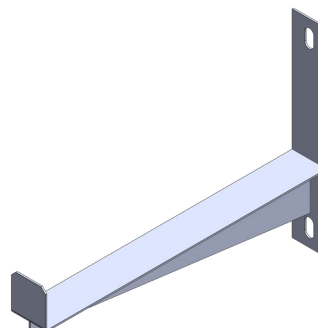
SUPORE VERTICAL SIMPLES  
MOD.: 9.003



SUPORE U SIMPLES  
MOD.: 9.004

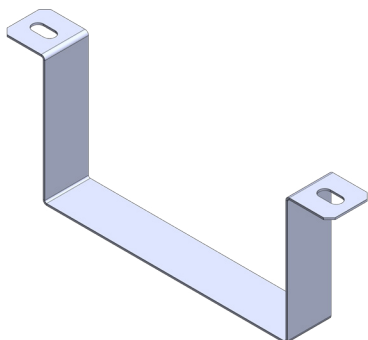


SUPORE REFORÇADO  
MOD.: 9.005

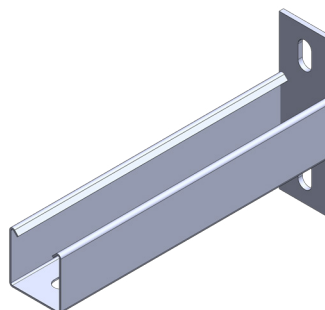


Dimensões disponíveis de 50, 75, 100, 150, 200, 300 e 400mm.

SUPORE DUPLO  
MOD.: 9.006

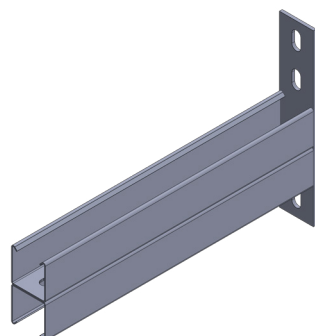


MÃO FRANCESA SIMPLES  
MOD.: 9.007



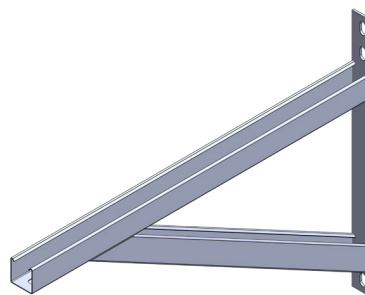
Dimensões disponíveis de 100, 200, 300, 400, 500 e 600mm.

MÃO FRANCESA DUPLA  
MOD.: 9.008



Dimensões disponíveis de 200, 300, 400, 500, 600, 700, 800 e 900mm.

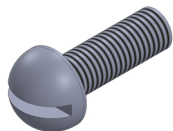
MÃO FRANCESA COM REFORÇO  
MOD.: 9.009



Dimensões disponíveis de 200, 300, 400, 500, 600, 700, 800, 900, 1000, 1200 e 1400mm.

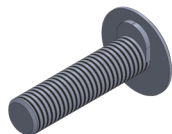
# ELEMENTOS DE FIXAÇÃO

PARAFUSO CABEÇA REDONDA COM FENDA SIMPLES  
MOD.: 9.100



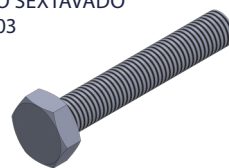
Diametro > Comprimento >	3/16"	1/4"	5/16"	3/8"
1/4"	✓			
3/8"	✓			
1/2"	✓	✓	✓	
5/8"	✓	✓		✓
3/4"	✓	✓	✓	✓
1"	✓	✓		
1" 1/4	✓	✓		
1" 1/2	✓	✓		

PARAFUSO LENTILHA AUTO TRAVANTE  
MOD.: 9.102



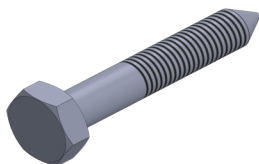
Diametro > Comprimento >	1/4"*	5/16"	3/8"
1/2"*	✓	✓	✓
5/8"	✓	✓	✓
3/4"	✓	✓	✓
1"	✓	✓	✓

PARAFUSO SEXTAVADO  
MOD.: 9.103



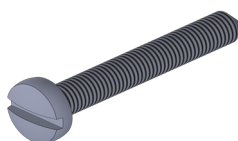
Diametro > Comprimento >	3/16"	1/4"	5/16"	3/8"
1/2"	✓	✓	✓	
5/8"	✓			
3/4"	✓	✓	✓	✓
1"	✓	✓	✓	✓
1" 1/4	✓	✓	✓	✓
1" 1/2	✓	✓	✓	✓
2"	✓	✓	✓	✓
2" 1/2	✓	✓	✓	✓
3"	✓	✓	✓	✓

PARAFUSO SEXTAVADO ROSCA SOBERBA  
MOD.: 9.104



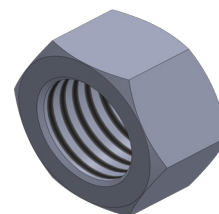
Diametro > Comprimento >	1/4"	5/16"	3/8"	Recomen- dado para buchas
1"3/4	✓			S8
2"		✓		S10
3"			✓	S12

PARAFUSO DE FENDA CABEÇA PANELA  
ROSCA SOBERBA  
MOD.: 9.105



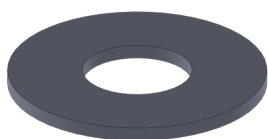
Diametro > Comprimento >	4,2	4,8	6,3	Recomen- dado para buchas
32	✓			S6
45		✓		S8
50			✓	S10

PORCA SEXTAVADA  
MOD.: 9.106



Dimensões disponíveis de 3/16", 1/4", 5/16", 3/8" e 1/2".

ARRUELA LISA  
MOD.: 9.107



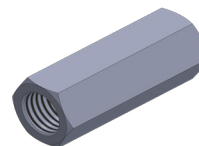
Dimensões disponíveis de 3/16", 1/4", 5/16", 3/8" e 1/2".

ARRUELA DE PRESSÃO  
MOD.: 9.108



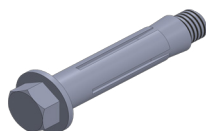
Dimensões disponíveis de 3/16", 1/4", 5/16", 3/8" e 1/2".

PROLONGADOR PARA SUSPENSÃO  
MOD.: 9.109



Diametro > Comprimento >	1/4"	5/16"	3/8"	1/2"
25mm	✓	✓	✓	✓
50mm	✓	✓	✓	✓

CHUMBADOR CBA COM PARAFUSO  
MOD.: 9.110



Diâmetro >	1/4"	5/16"	3/8"	1/2"	5/8"
Comprimento parafuso >	2"	2"1/4	2"1/2	3"	3"1/2
Diâmetro furo >	3/8"- 10mm	1/2"- 13mm	9/16"- 14mm	3/4"- 19mm	7/8"- 22mm
Profundidade furo >	55mm	65mm	70mm	80mm	95mm

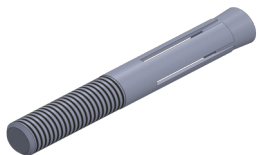
CHUMBADOR URA ROSCA INTERNA  
MOD.: 9.111



Diâmetro >	1/4"	5/16"	3/8"	1/2"	5/8"
Comprimento rosca >	12mm	14mm	16mm	22mm	30mm
Diâmetro furo >	7/16"- 11mm	1/2"- 13mm	9/16"- 14mm	23/32"- 18mm	7/8"- 22mm
Profundidade furo >	30mm	38mm	40mm	55mm	65mm

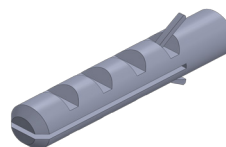
# ELEMENTOS DE FIXAÇÃO

CHUMBADOR ARX ROSCA EXTERNA  
MOD.: 9.112



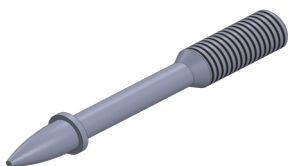
Diâmetro >	1/4"	5/16"	3/8"	1/2"	5/8"
Comprimento rosca >	--	--	30mm	35mm	45mm
Diâmetro furo >	--	--	3/8"- 9,5mm	1/2"- 13mm	5/8"- 16mm
Profundidade furo >	--	--	45mm	55mm	65mm

BUCHA DE NYLON  
MOD.: 9.113



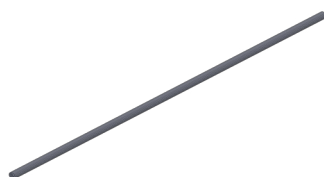
Diâmetro >	S6	S8	S10	S12
Diâmetro furo >	6mm	8mm	10mm	12mm
Profundidade furo >	40mm	50mm	60mm	70mm

PINO COM ROSCA  
MOD.: 9.114



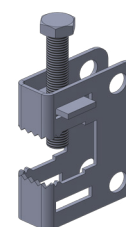
Diâmetro >	1/4"
Comprimento rosca >	20mm
Comprimento haste >	30mm

BARRA ROSCADA  
MOD.: 9.115



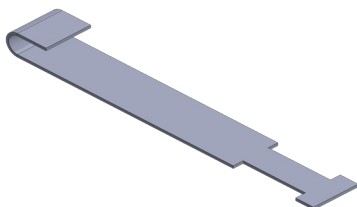
Diametro >	1/4"	5/16"	3/8"	1/2"
Comprimento >				
3000mm	✓	✓	✓	✓
6000mm	✓	✓	✓	✓

GRAMPO C  
MOD.: 9.116



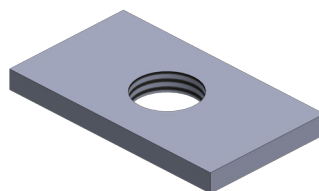
Fornecido com um parafuso Ø3/8" e uma porca retangular.

PRESILHA PARA GRAMPO C  
MOD.: 9.117



Ajustar fixação da haste de acordo com a instalação.

PORCA RETANGULAR PARA GRAMPO C  
MOD.: 9.118

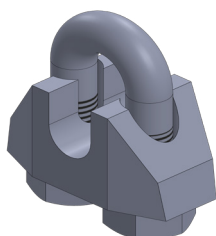


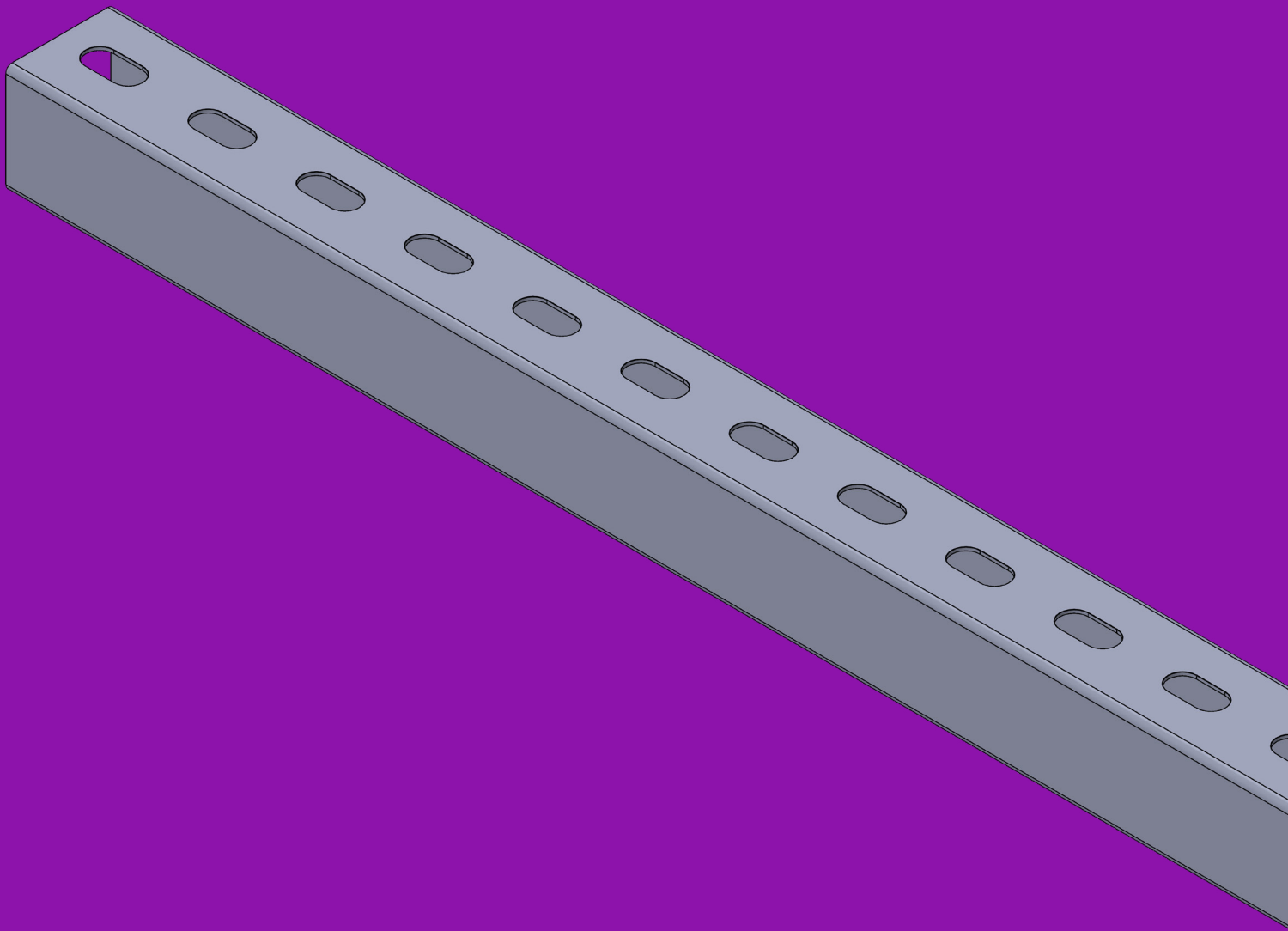
BALANCIM GRAMPO TIPO C  
MOD.: 9.119



Fornecido com um parafuso Ø3/8" e uma porca sextavada.

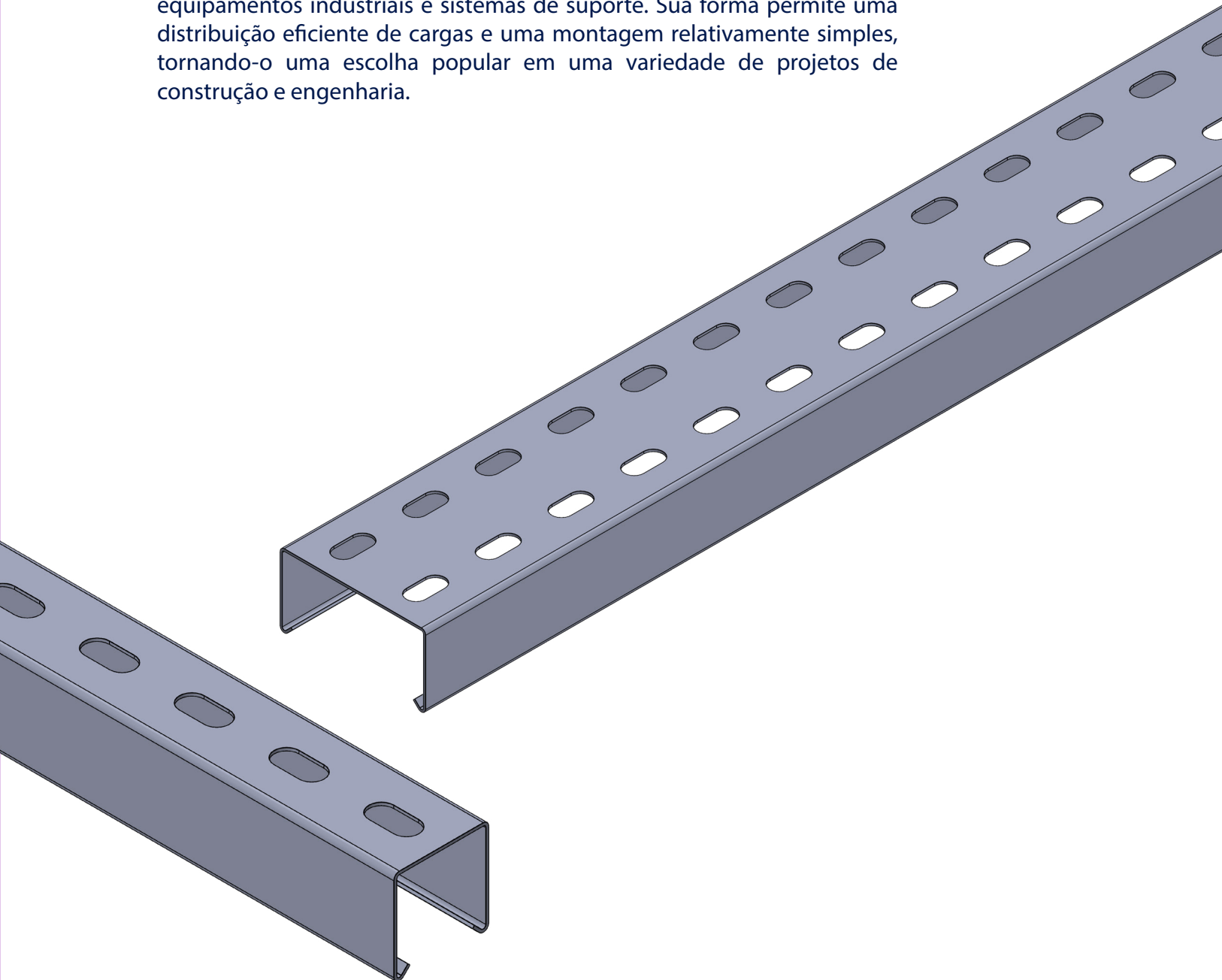
GRAMPO PARA CABO DE AÇO DE 1/8"  
MOD.: 9.120





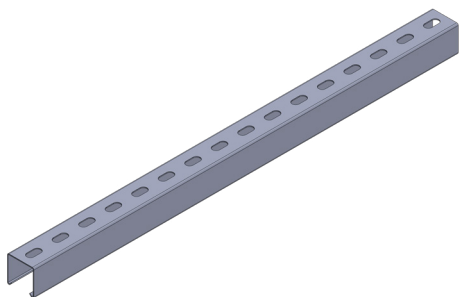
# PERFILADOS

Um perfilado é um tipo de material utilizado na construção civil, caracterizado por sua forma alongada e seção transversal em formato de “U”, “I” ou outras geometrias específicas, dependendo da aplicação. Geralmente feito de metal, como aço carbono ou alumínio, o perfilado é conhecido por sua resistência e versatilidade. Sua principal função é acomodar e proteger cabos elétricos para sistemas de iluminação, mas também é amplamente utilizado em estruturas metálicas, como vigas, pilares e treliças, além de ser empregado em outras aplicações, como na fabricação de móveis, equipamentos industriais e sistemas de suporte. Sua forma permite uma distribuição eficiente de cargas e uma montagem relativamente simples, tornando-o uma escolha popular em uma variedade de projetos de construção e engenharia.

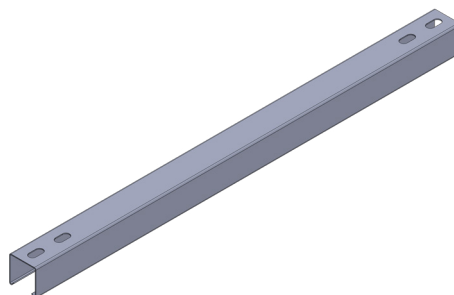


# PERFILADOS

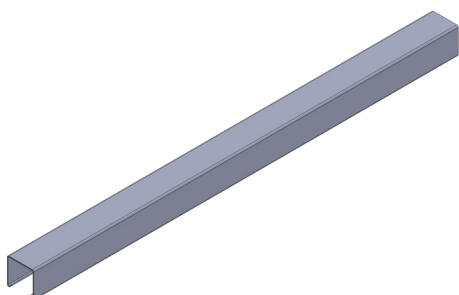
PERFIL PERFURADO 38x38mm  
MOD.: 2.100



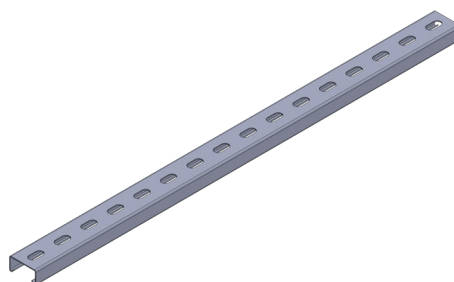
PERFIL LISO COM 2 FUROS 38x38mm  
MOD.: 2.101



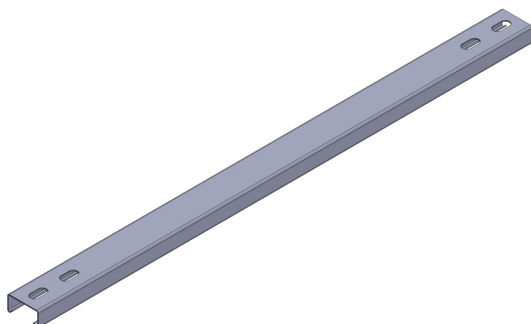
PERFIL LISO 38X38MM  
MOD.: 2.102



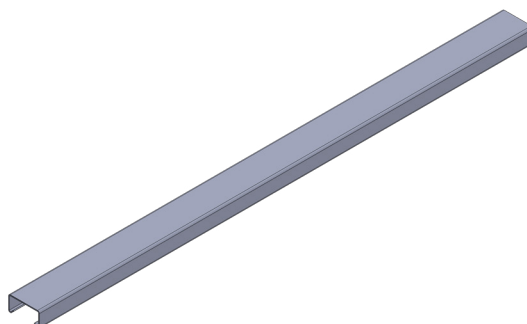
PERFIL PERFURADO 38x19mm  
MOD.: 2.103



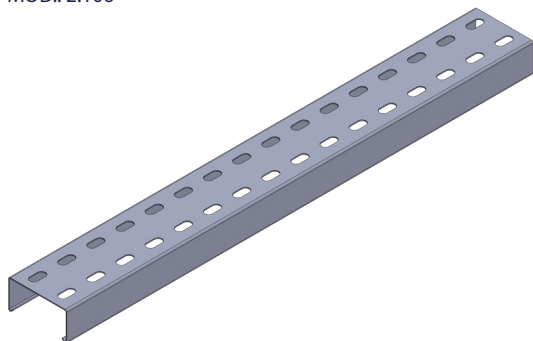
PERFIL LISO COM 2 FUROS 38x19mm  
MOD.: 2.104



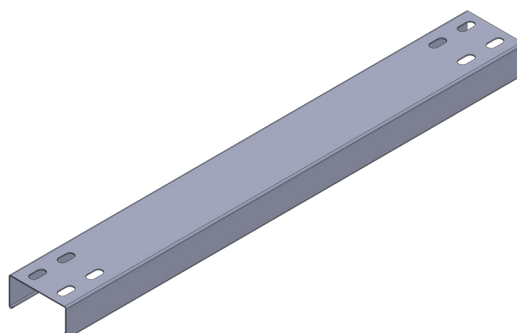
PERFIL LISO 38x19mm  
MOD.: 2.105



PERFIL PERFURADO 76X38MM  
MOD.: 2.106

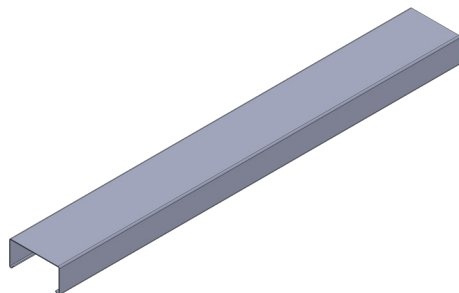


PERFIL LISO COM 4 FUROS 76x38mm  
MOD.: 2.107

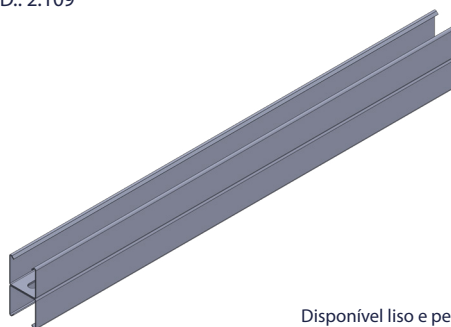


# PERFILADOS

PERFIL LISO 76x38mm  
MOD.: 2.108

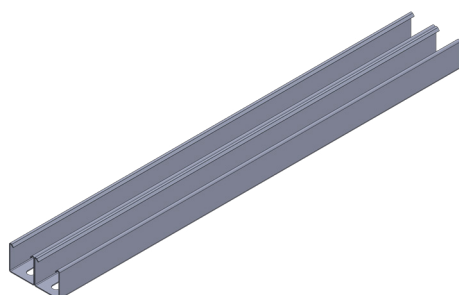


PERFILADO CONJUGADO VERTICAL  
MOD.: 2.109



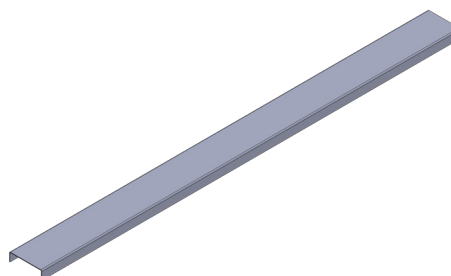
Disponível liso e perfurado.

PERFILADO CONJUGADO HORIZONTAL  
MOD.: 2.110

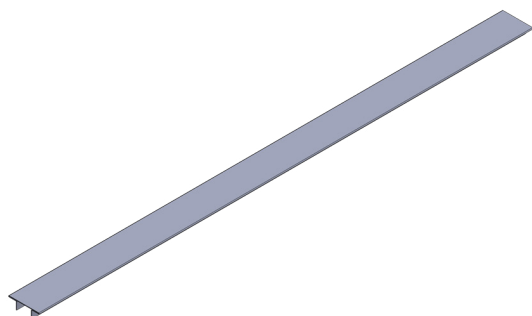


Disponível liso e perfurado.

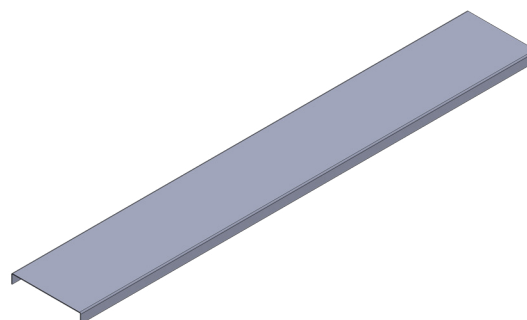
TAMPA ENCAIXE 38x38mm  
MOD.: 2.506



TAMPA PRESSÃO 38x38mm  
MOD.: 2.507



TAMPA ENCAIXE 76x76mm  
MOD.: 2.508



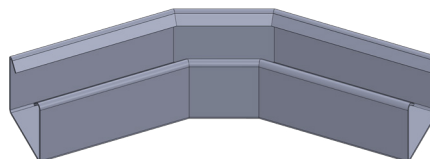


# ELEMENTOS DE TRANSIÇÃO

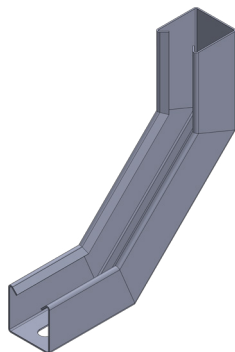
CURVA HORIZONTAL 90°  
MOD.: 2.201



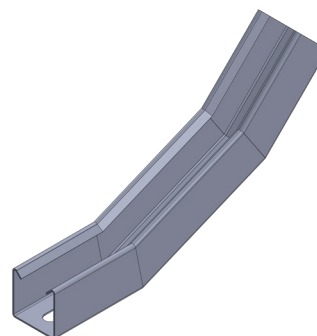
CURVA HORIZONTAL 45°  
MOD.: 2.202



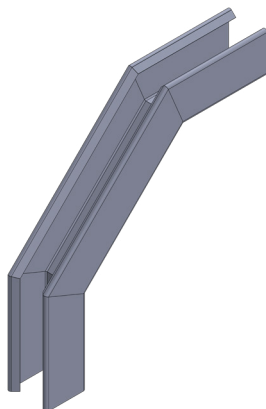
CURVA VERTICAL INTERNA 90°  
MOD.: 2.203



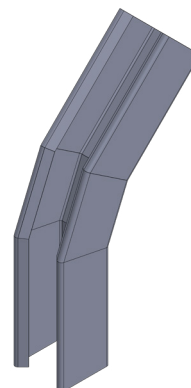
CURVA VERTICAL INTERNA 45°  
MOD.: 2.204



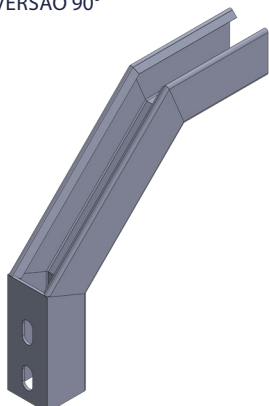
CURVA VERTICAL EXTERNA 90°  
MOD.: 2.205



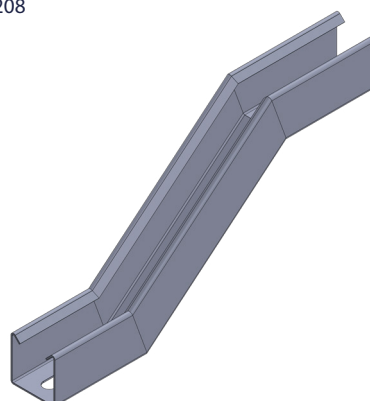
CURVA VERTICAL EXTERNA 45°  
MOD.: 2.206



CURVA DE INVERSÃO 90°  
MOD.: 2.207



DESNÍVEL VERTICAL  
MOD.: 2.208



## ELEMENTOS DE TRANSIÇÃO

DESVIO HORIZONTAL PARA DIREITA  
MOD.: 2.209

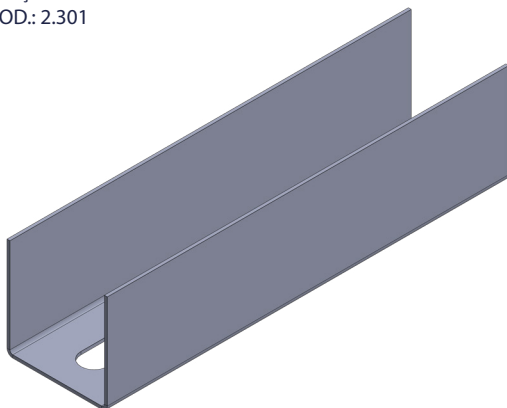


DESVIO HORIZONTAL PARA ESQUERDA  
MOD.: 2.210

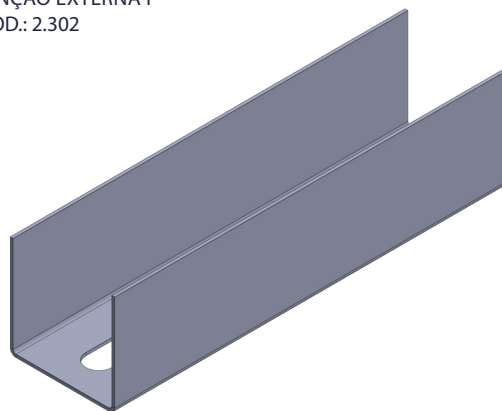


## ELEMENTOS DE CONEXÃO

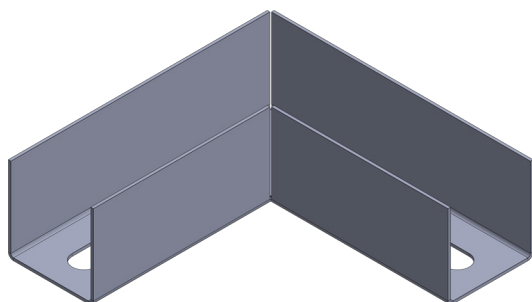
JUNÇÃO INTERNA I  
MOD.: 2.301



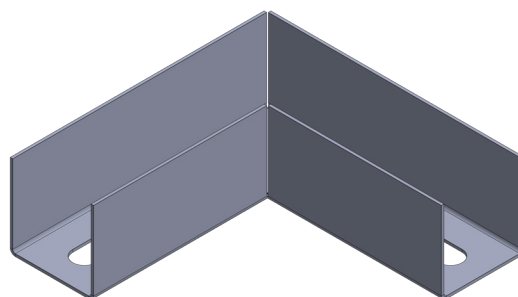
JUNÇÃO EXTERNA I  
MOD.: 2.302



JUNÇÃO INTERNA L  
MOD.: 2.303

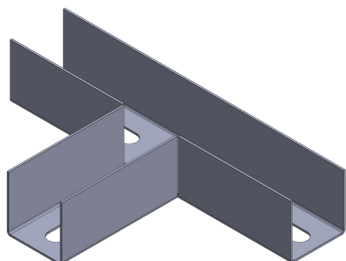


JUNÇÃO EXTERNA L  
MOD.: 2.304

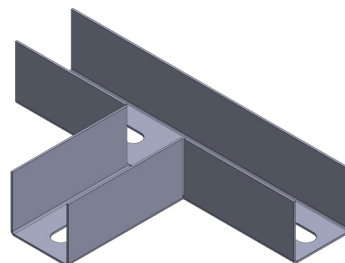


# ELEMENTOS DE CONEXÃO

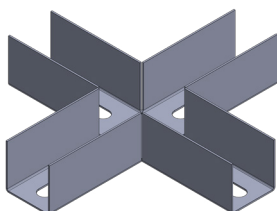
JUNÇÃO INTERNA T  
MOD.: 2.305



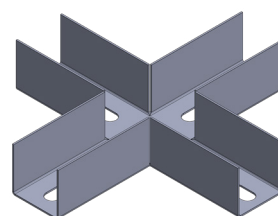
JUNÇÃO EXTERNA T  
MOD.: 2.306



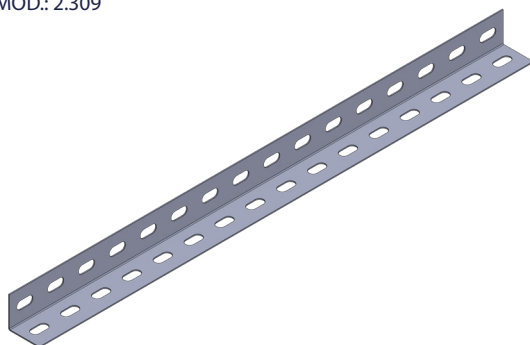
JUNÇÃO INTERNA X  
MOD.: 2.307



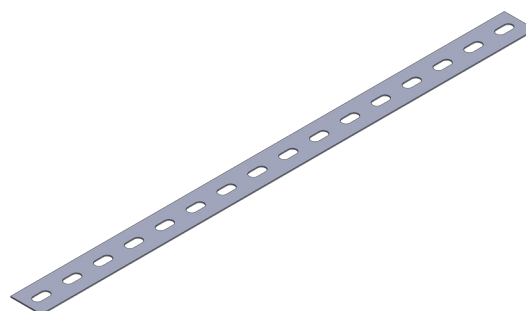
JUNÇÃO EXTERNA X  
MOD.: 2.308



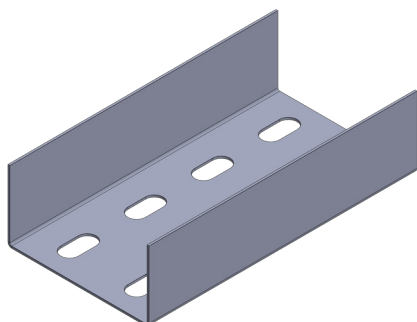
CANTONEIRA PERFURADA  
MOD.: 2.309



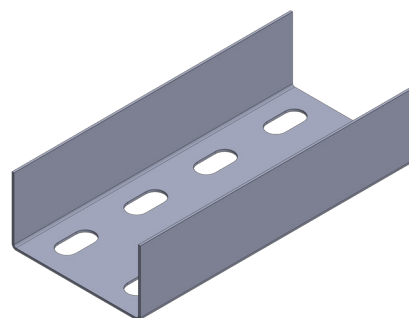
FITA PERFURADA  
MOD.: 2.310



JUNÇÃO EXTERNA I 76x38  
MOD.: 2.311

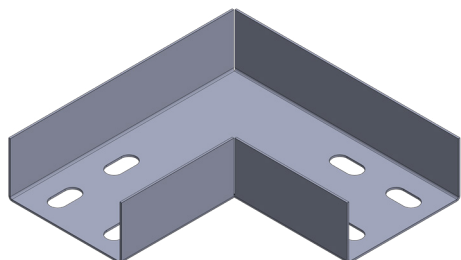


JUNÇÃO INTERNA I 76x38  
MOD.: 2.312

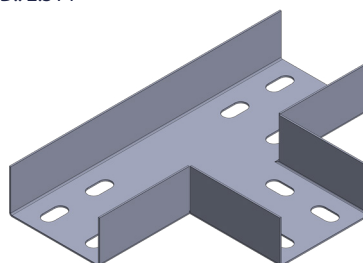


# ELEMENTOS DE CONEXÃO

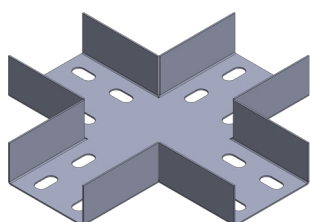
JUNÇÃO INTERNA L 76x38  
MOD.: 2.313



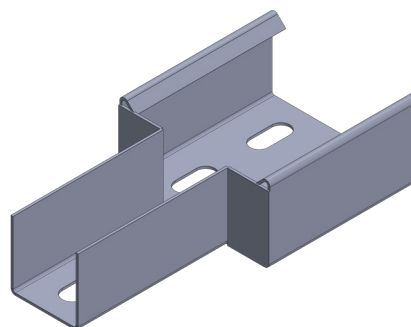
JUNÇÃO INTERNA T 76x38  
MOD.: 2.314



JUNÇÃO INTERNA X 76x38  
MOD.: 2.315

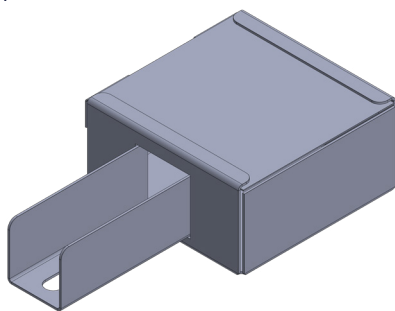


REDUÇÃO DA CAIXA PARA PERFILADO  
MOD.: 2.316

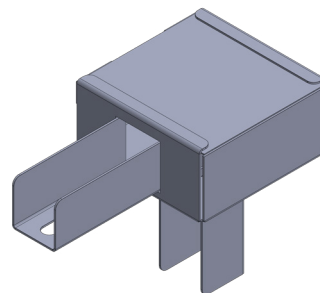


## ELEMENTOS DE CAIXA DE DERIVAÇÃO

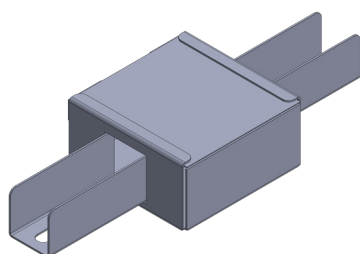
CAIXA DE DERIVAÇÃO I PARA PERFILADO 38x38  
MOD.: 2.401



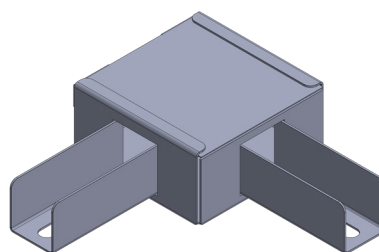
CAIXA DE DERIVAÇÃO I COM SAÍDA INFERIOR  
PARA PERFILADO 38x38  
MOD.: 2.402



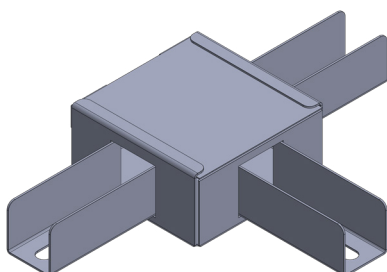
CAIXA DE DERIVAÇÃO C PARA PERFILADO 38x38  
MOD.: 2.403



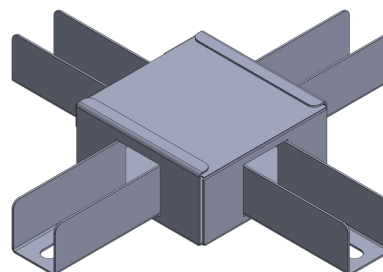
CAIXA DE DERIVAÇÃO L PARA PERFILADO 38x38  
MOD.: 2.404



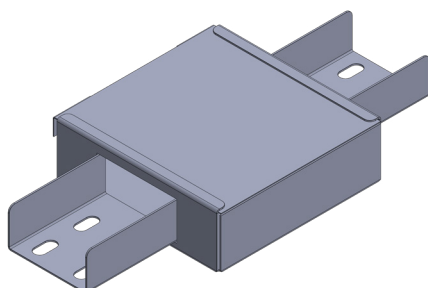
CAIXA DE DERIVAÇÃO T PARA PERFILADO 38x38  
MOD.: 2.405



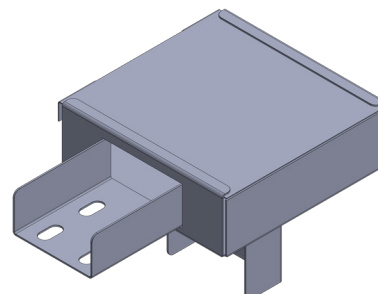
CAIXA DE DERIVAÇÃO X PARA PERFILADO 38x38  
MOD.: 2.406



CAIXA DE DERIVAÇÃO I PARA PERFILADO 76x76  
MOD.: 2.407

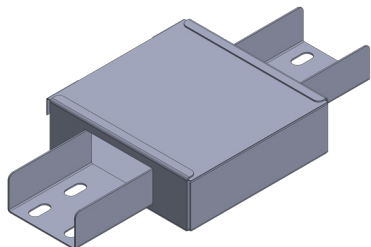


CAIXA DE DERIVAÇÃO I COM SAÍDA INFERIOR PARA  
PERFILADO 76x76  
MOD.: 2.408

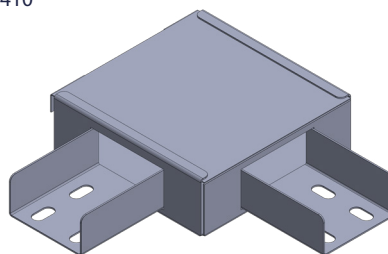


## ELEMENTOS DE CAIXA DE DERIVAÇÃO

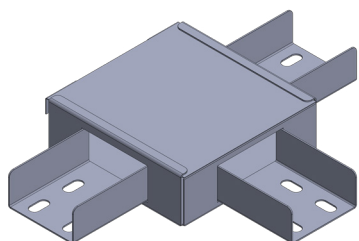
CAIXA DE DERIVAÇÃO C PARA PERFILADO 76x76 MOD.: 2.409



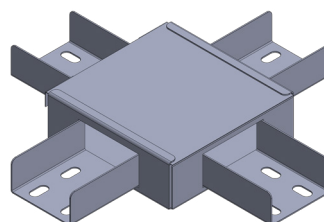
CAIXA DE DERIVAÇÃO L PARA PERFILADO 76x76 MOD.: 2.410



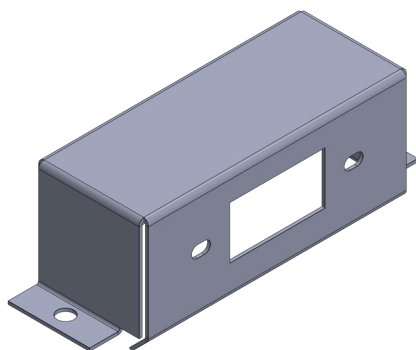
CAIXA DE DERIVAÇÃO T PARA PERFILADO 76x76 MOD.: 2.411



CAIXA DE DERIVAÇÃO X PARA PERFILADO 76x76 MOD.: 2.412

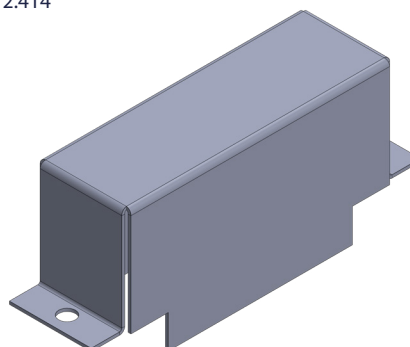


CAIXA PARA TOMADA EM PERFILADO MOD.: 2.413



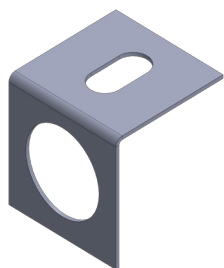
Tomada não inclusa.

CAIXA DE LIGAÇÃO EM PERFILADO MOD.: 2.414



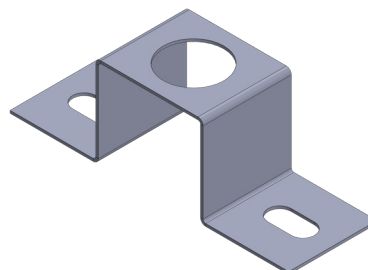
## ELEMENTOS DE ACABAMENTO

SAÍDA FINAL  
MOD.: 2.501



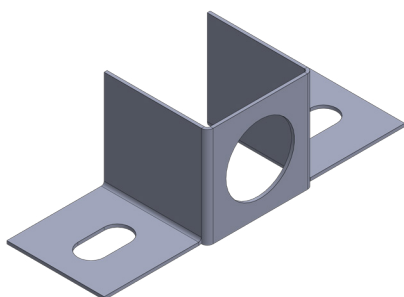
Disponível para eletrodutos de Ø1/2", Ø3/4" e Ø1".

SAÍDA SUPERIOR  
MOD.: 2.502



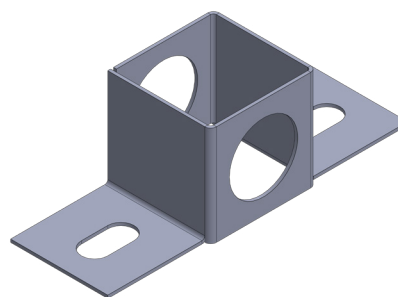
Disponível para eletrodutos de Ø1/2", Ø3/4" e Ø1".

SAÍDA LATERAL  
MOD.: 2.503



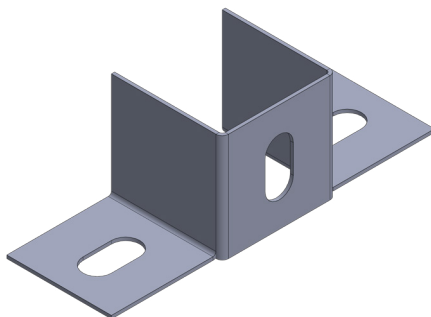
Disponível para eletrodutos de Ø1/2", Ø3/4" e Ø1".

SAÍDA LATERAL DUPLA  
MOD.: 2.504



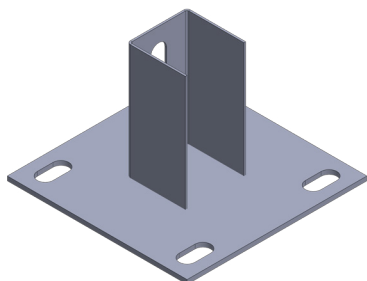
Disponível para eletrodutos de Ø1/2", Ø3/4" e Ø1".

BASE PARA LIGAÇÃO EM PAINEL 38X38MM  
MOD.: 2.505

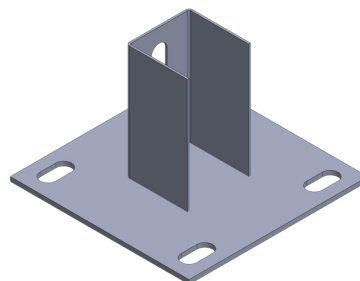


# ELEMENTOS ESTRUTURAIS

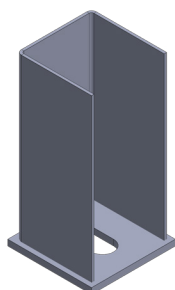
SAPATA INTERNA DE 4 FUROS 38x38MM  
MOD.: 2.601



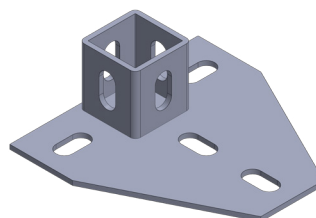
SAPATA EXTERNA DE 4 FUROS 38x38mm  
MOD.: 2.602



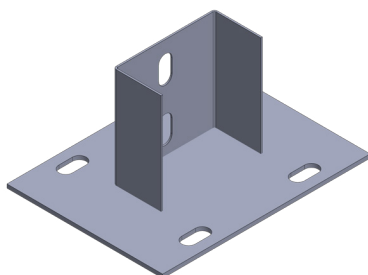
SAPATA INTERNA DE 1 FURO 38x38mm  
MOD.: 2.603



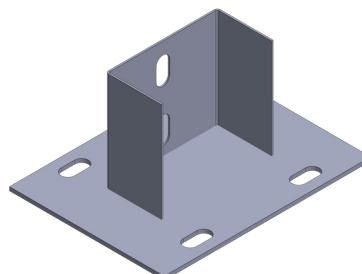
SAPATA REFORÇADA 38x38mm  
MOD.: 2.604



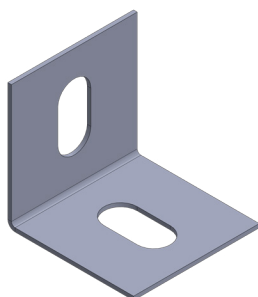
SAPATA INTERNA DE 4 FUROS 76x38mm  
MOD.: 2.605



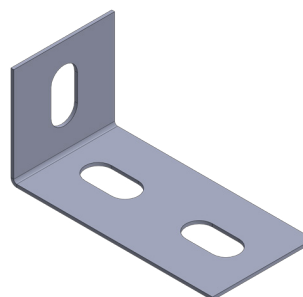
SAPATA EXTERNA DE 4 FUROS 76x38mm  
MOD.: 2.606



CANTONEIRA COM 2 FUROS  
MOD.: 2.607



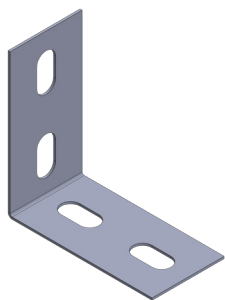
CANTONEIRA COM 3 FUROS  
MOD.: 2.608



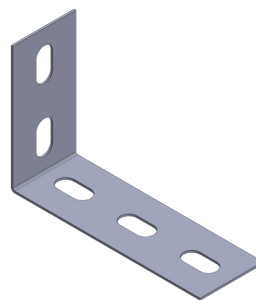


## ELEMENTOS ESTRUTURAIS

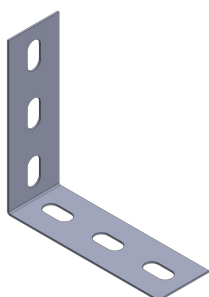
CANTONEIRA COM 4 FUROS  
MOD.: 2.609



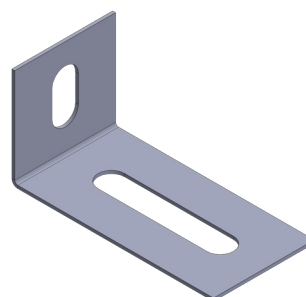
CANTONEIRA COM 5 FUROS  
MOD.: 2.610



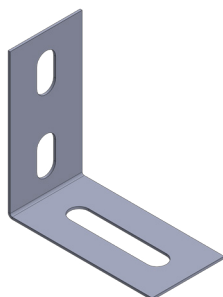
CANTONEIRA COM 6 FUROS  
MOD.: 2.611



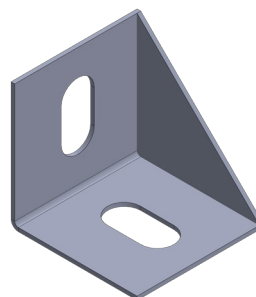
CANTONEIRA COM 1 FURO E RASGO  
MOD.: 2.612



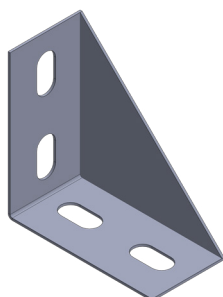
CANTONEIRA COM 2 FUROS E RASGO  
MOD.: 2.613



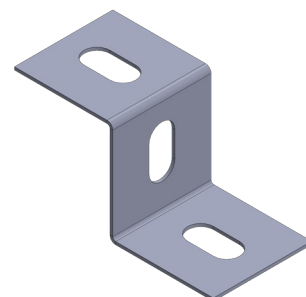
CANTONEIRA REFORÇADA COM 2 FUROS  
MOD.: 2.614



CANTONEIRA REFORÇADA COM 4 FUROS  
MOD.: 2.615

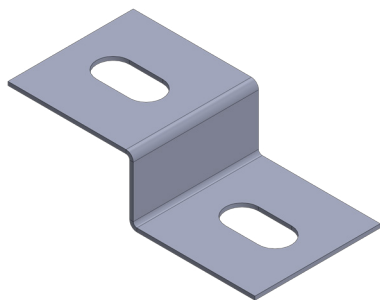


CANTONEIRA Z  
MOD.: 2.616

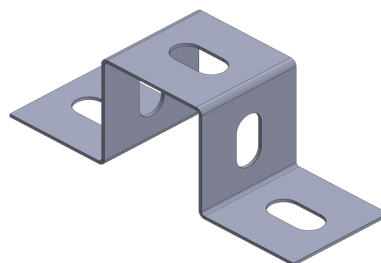


# ELEMENTOS ESTRUTURAIS

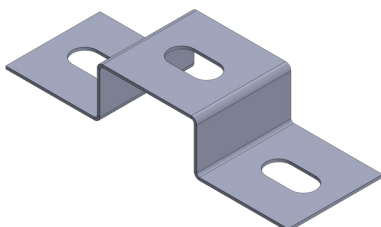
CANTONEIRA Z BAIXA  
MOD.: 2.617



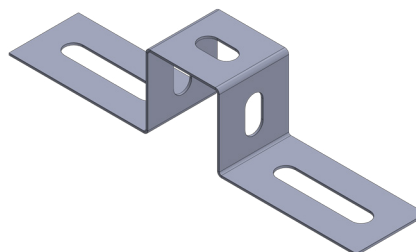
CANTONEIRA ZZ  
MOD.: 2.618



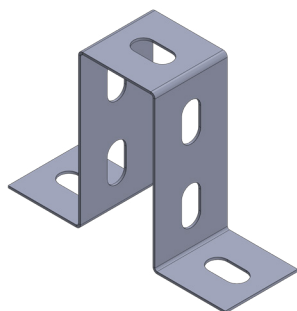
CANTONEIRA ZZ BAIXA  
MOD.: 2.619



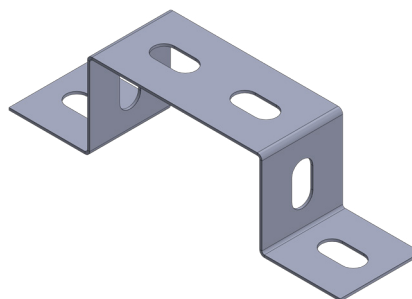
CANTONEIRA ZZ COM RASGO  
MOD.: 2.620



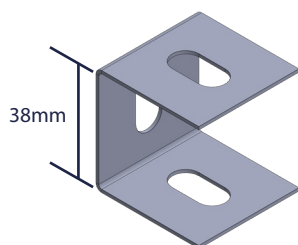
CANTONEIRA ZZ VERTICAL DUPLA  
MOD.: 2.621



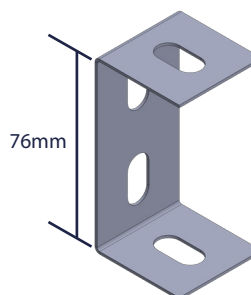
CANTONEIRA ZZ DUPLA HORIZONTAL  
MOD.: 2.622



DISTANCIADOR U SIMPLES  
MOD.: 2.623

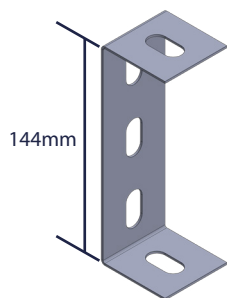


DISTANCIADOR U DUPLO  
MOD.: 2.624

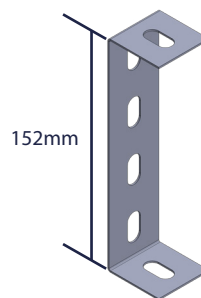


# ELEMENTOS ESTRUTURAIS

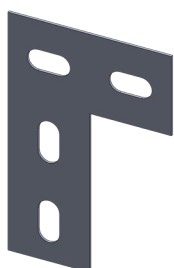
DISTANCIADOR U TRIPLIO  
MOD.: 2.625



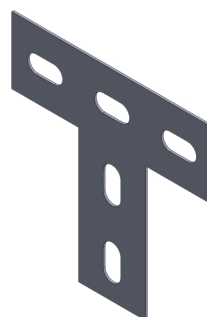
DISTANCIADOR U QUADRUPLIO  
MOD.: 2.626



JUNÇÃO L RETA  
MOD.: 2.627



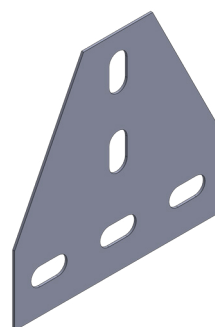
JUNÇÃO T RETA  
MOD.: 2.628



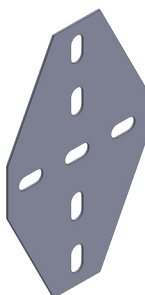
JUNÇÃO PLANA L REFORÇADA  
MOD.: 2.629



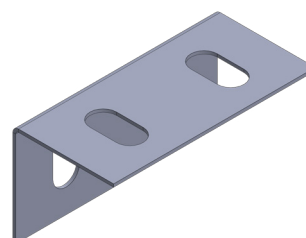
JUNÇÃO PLANA T 5 FUROS  
MOD.: 2.630



JUNÇÃO PLANA X 7 FUROS  
MOD.: 2.631

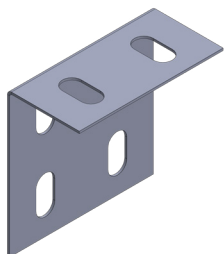


CANTONEIRA DUPLA COM 4 FUROS  
MOD.: 2.632

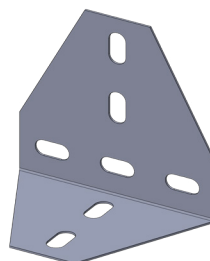


# ELEMENTOS ESTRUTURAIS

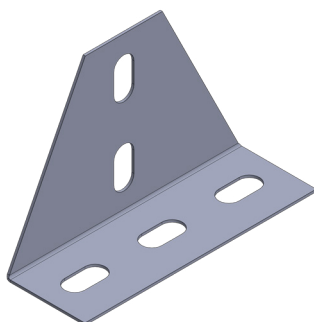
CANTONEIRA DUPLA COM 6 FUROS  
MOD.: 2.633



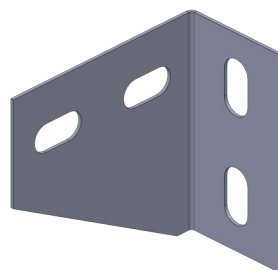
CANTONEIRA DUPLA T  
MOD.: 2.634



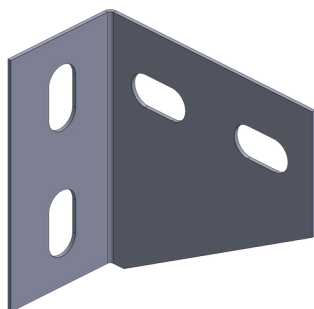
CANTONEIRA T COM 5 FUROS  
MOD.: 2.635



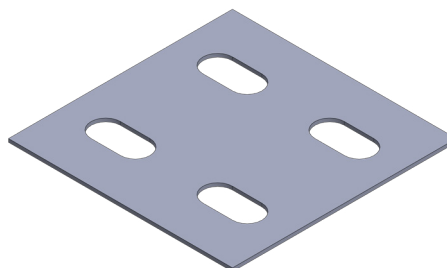
CANTONEIRA LR  
MOD.: 2.636



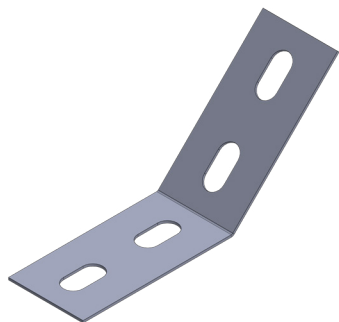
CANTONEIRA LL  
MOD.: 2.637



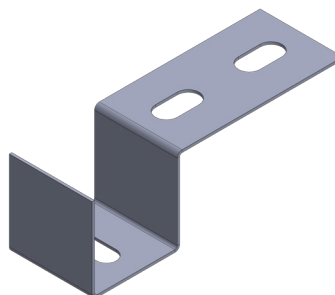
TALA DUPLA COM 4 FUROS  
MOD.: 2.638



CANTONEIRA ANGULAR 45°  
MOD.: 2.639



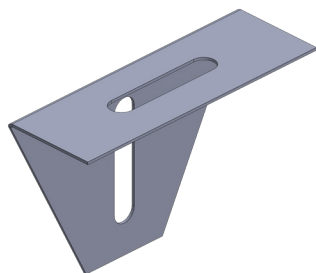
CANTONEIRA ZU  
MOD.: 2.640



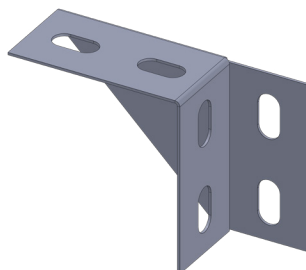
Disponível com ângulos de 30°, 45° e 60°.

# ELEMENTOS ESTRUTURAIS

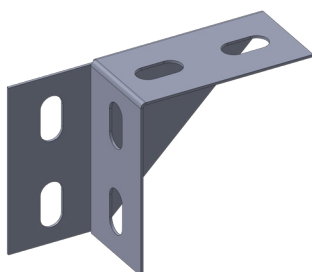
CANTONEIRA T COM RASGOS  
MOD.: 2.641



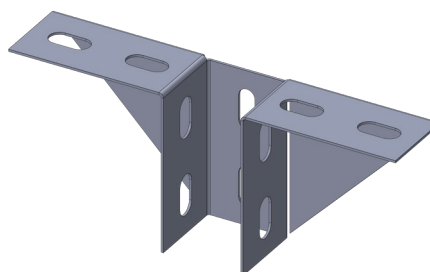
CANTONEIRA REFORÇADA LL REVERSA  
MOD.: 2.642



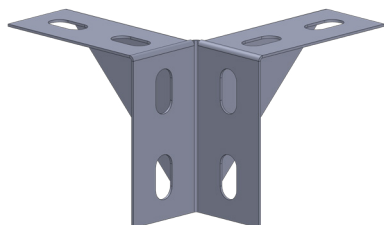
CANTONEIRA REFORÇADA LR REVERSA  
MOD.: 2.643



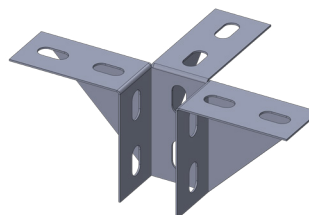
CANTONEIRA REFORÇADA T REVERSA  
MOD.: 2.644



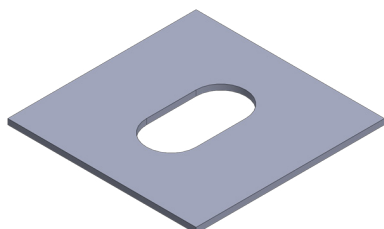
CANTONEIRA REFORÇADA C REVERSA DUPLA  
MOD.: 2.645



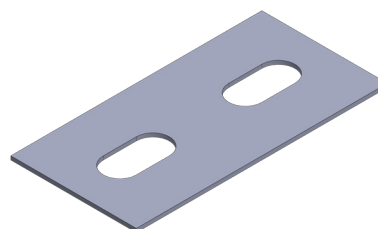
CANTONEIRA REFORÇADA T REVERSA TRIPLA  
MOD.: 2.646



TALA COM FURO  
MOD.: 2.647

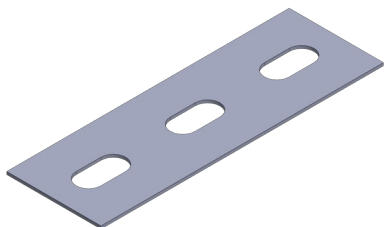


TALA COM 2 FUROS  
MOD.: 2.648

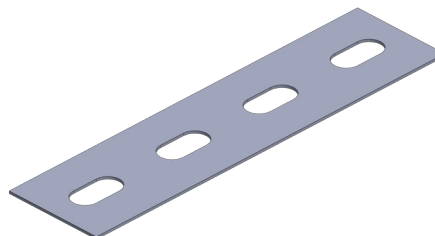


# ELEMENTOS ESTRUTURAIS

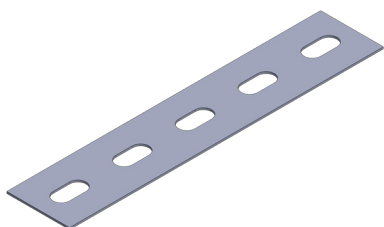
TALA COM 3 FUROS  
MOD.: 2.649



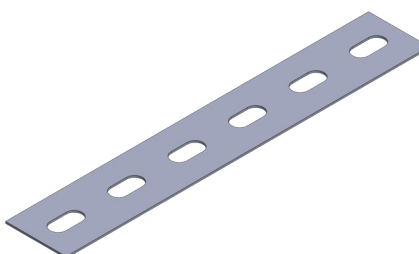
TALA COM 4 FUROS  
MOD.: 2.650



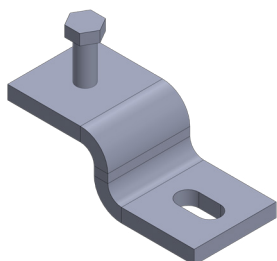
TALA COM 5 FUROS  
MOD.: 2.651



TALA COM 6 FUROS  
MOD.: 2.652

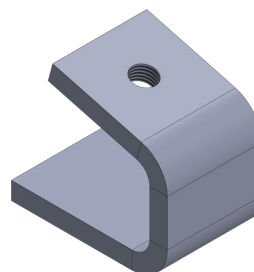


TALA COMPRESSORA  
MOD.: 2.653

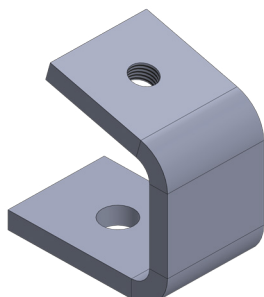


Fornecido com 1x parafuso Ø3/8"x1"1/2.

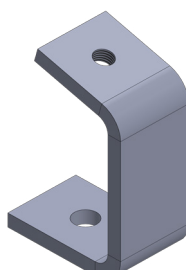
FIXADOR INTERNO TRANSVERSAL  
MOD.: 2.654



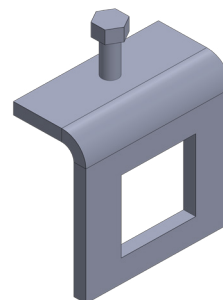
FIXADOR EXTERNO LONGITUDINAL  
PARA PERFILADO 38X19  
MOD.: 2.655



FIXADOR EXTERNO LONGITUDINAL  
PARA PERFILADO 38X38  
MOD.: 2.656



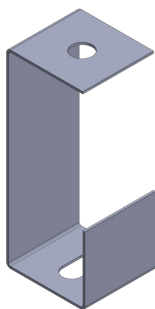
FIXADOR TRANSVERSAL  
MOD.: 2.657



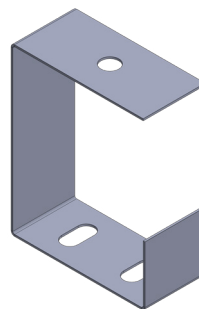
Fornecido com 1x parafuso Ø3/8"x1"1/2.

## ELEMENTOS DE SUSTENTAÇÃO

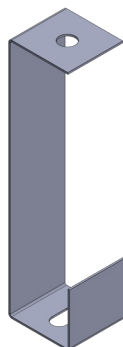
GANCHO CURTO 38x38x100mm  
MOD.: 2.701



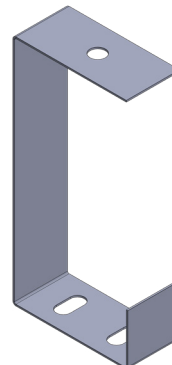
GANCHO CURTO 76x38x100mm  
MOD.: 2.702



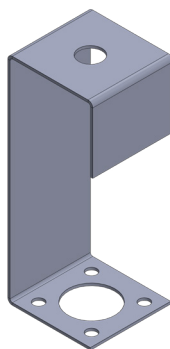
GANCHO LONGO 38x38x165mm  
MOD.: 2.703



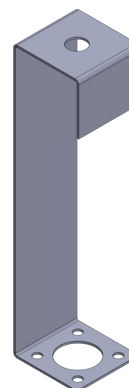
GANCHO LONGO 76x38x165mm  
MOD.: 2.704



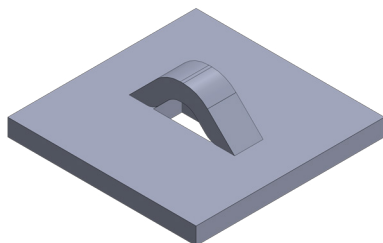
GANCHO CURTO PARA LUMINÁRIA  
MOD.: 2.705



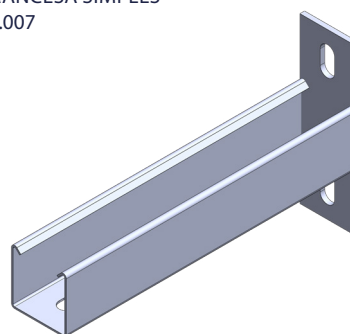
GANCHO LONGO PARA LUMINÁRIA  
MOD.: 2.706



SUSPENSOR PARA CABO DE AÇO Ø1-8"  
MOD.: 2.707



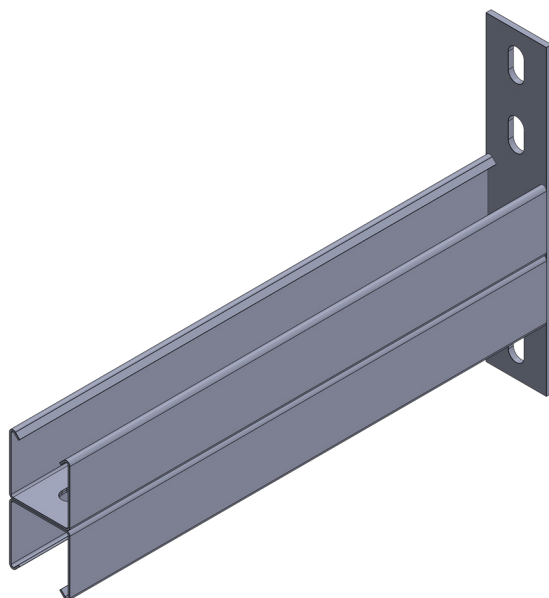
MÃO FRANCESA SIMPLES  
MOD.: 9.007



Dimensões disponíveis de 100, 200, 300, 400, 500 e 600mm.

## ELEMENTOS DE SUSTENTAÇÃO

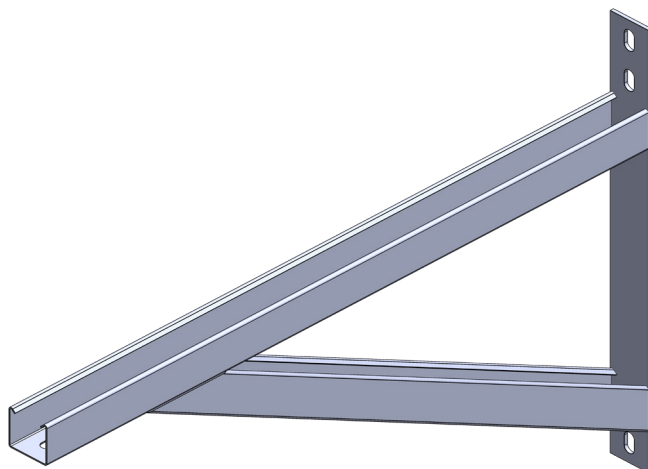
MÃO FRANCESA DUPLA  
MOD.: 9.008



Dimensões disponíveis de 200, 300, 400, 500, 600, 700, 800 e 900mm.

---

MÃO FRANCESA COM REFORÇO  
MOD.: 9.009

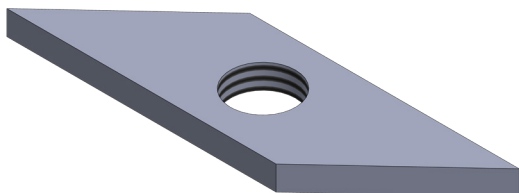


Dimensões disponíveis de 200, 300, 400, 500, 600, 700, 800, 900, 1000, 1200 e 1400mm.



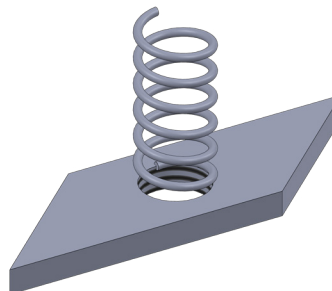
## ELEMENTOS DE FIXAÇÃO

PORCA LOSANGULAR COM ROSCA  
MOD.: 9.121



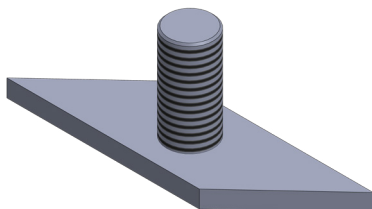
Disponível com roscas  $\varnothing 1/4"$ ,  $\varnothing 5/16"$ ,  $\varnothing 3/8"$  e  $\varnothing 1/2"$ .

PORCA LOSANGULAR COM MOLA  
MOD.: 9.122



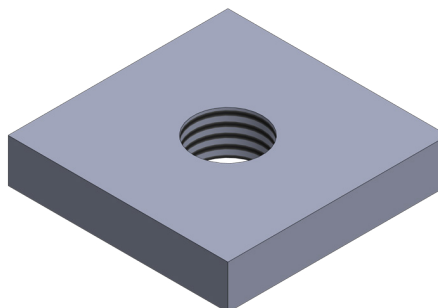
Disponível com roscas  $\varnothing 1/4"$ ,  $\varnothing 5/16"$ ,  $\varnothing 3/8"$  e  $\varnothing 1/2"$ .

PORCA LOSANGULAR COM PINO  
MOD.: 9.123



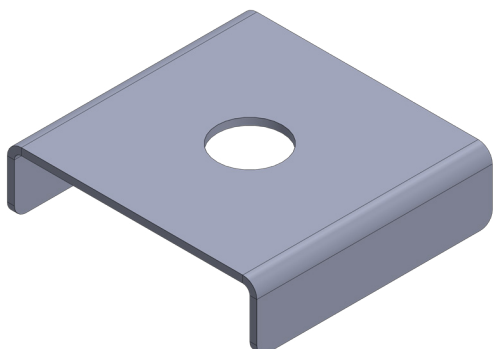
Disponível com roscas  $\varnothing 1/4"$ ,  $\varnothing 5/16"$ ,  $\varnothing 3/8"$  e  $\varnothing 1/2"$ .

PORCA QUADRADA SEM MOLA  
MOD.: 9.124

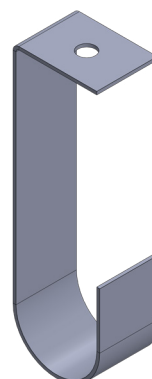


Disponível com roscas  $\varnothing 1/4"$ ,  $\varnothing 5/16"$ ,  $\varnothing 3/8"$  e  $\varnothing 1/2"$ .

ADAPTADOR DE SEGURANÇA  
MOD.: 9.125

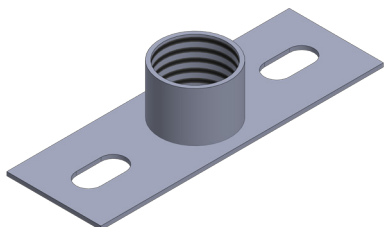


SUPORE J  
MOD.: 9.126

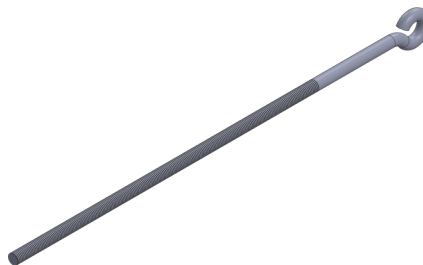


## ELEMENTOS DE FIXAÇÃO

SAÍDA COM LUVA  
MOD.: 9.127

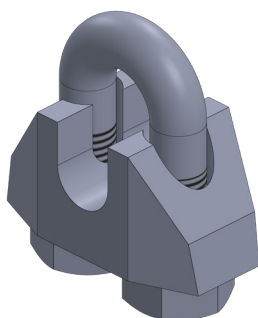


PARAFUSO OLHAL  
MOD.: 9.128

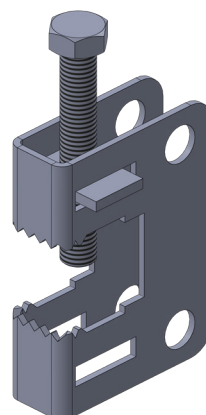


Rosca >	Especificar medida da rosca		
Comprimento total >	250mm	200mm	150mm
Comprimento rosca >	200mm	150mm	100mm

GRAMPO PARA CABO DE AÇO DE 1/8"  
MOD.: 9.120

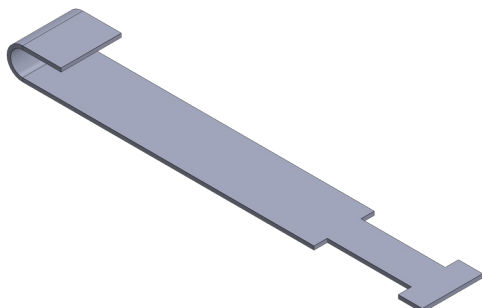


GRAMPO C  
MOD.: 9.116



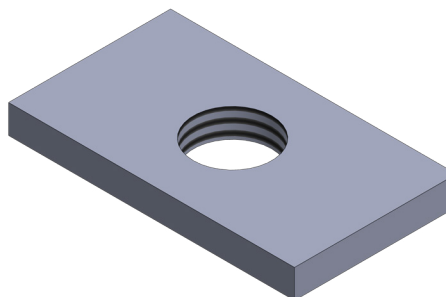
Fornecido com um parafuso Ø3/8" e uma porca retangular.

PRESILHA PARA GRAMPO C  
MOD.: 9.117



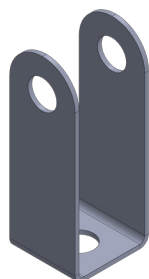
Ajustar fixação da haste de acordo com a instalação.

PORCA RETANGULAR PARA GRAMPO C  
MOD.: 9.118



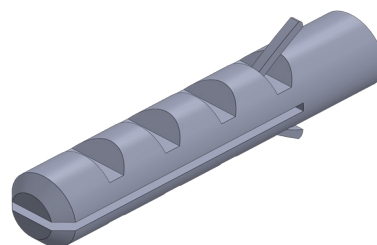
## ELEMENTOS DE FIXAÇÃO

BALANCIM GRAMPO TIPO C  
MOD.: 9.119



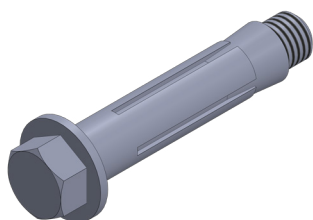
Fornecido com um parafuso Ø3/8" e uma porca sextavada.

BUCHA DE NYLON  
MOD.: 9.113



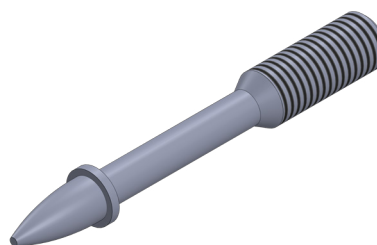
Diametro >	S6	S8	S10	S12
Diâmetro furo >	6mm	8mm	10mm	12mm
Profundidade furo >	40mm	50mm	60mm	70mm

CHUMBADOR CBA COM PARAFUSO  
MOD.: 9.110



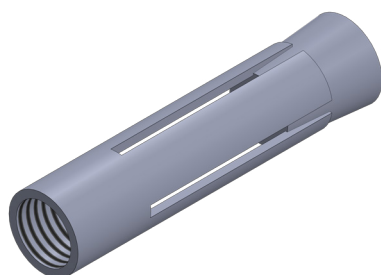
Diâmetro >	1/4"	5/16"	3/8"	1/2"	5/8"
Comprimento parafuso >	2"	2 1/4"	2 1/2"	3"	3 1/2"
Diâmetro furo >	3/8"-10mm	1/2"-13mm	9/16"-14mm	3/4"-19mm	7/8"-22mm
Profundidade furo >	55mm	65mm	70mm	80mm	95mm

PINO COM ROSCA  
MOD.: 9.114



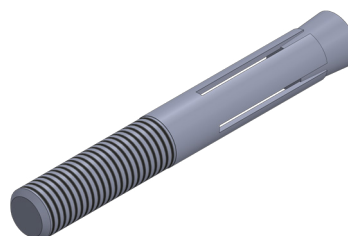
Diâmetro >	1/4"
Comprimento rosca >	20mm
Comprimento haste >	30mm

CHUMBADOR URA ROSCA INTERNA  
MOD.: 9.111



Diâmetro >	1/4"	5/16"	3/8"	1/2"	5/8"
Comprimento rosca >	12mm	14mm	16mm	22mm	30mm
Diâmetro furo >	7/16"-11mm	1/2"-13mm	9/16"-14mm	23/32"-18mm	7/8"-22mm
Profundidade furo >	30mm	38mm	40mm	55mm	65mm

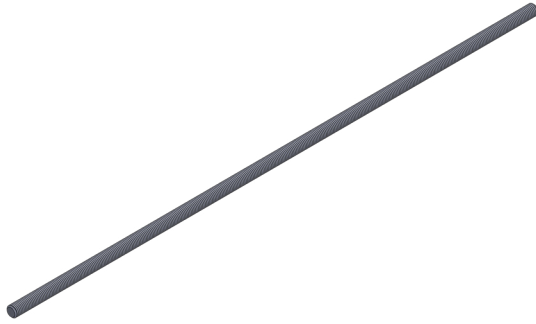
CHUMBADOR ARX ROSCA EXTERNA  
MOD.: 9.112



Diâmetro >	1/4"	5/16"	3/8"	1/2"	5/8"
Comprimento rosca >	--	--	30mm	35mm	45mm
Diâmetro furo >	--	--	3/8"-9,5mm	1/2"-13mm	5/8"-16mm
Profundidade furo >	--	--	45mm	55mm	65mm

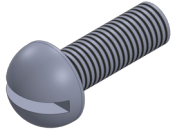
# ELEMENTOS DE FIXAÇÃO

BARRA ROSCADA  
MOD.: 9.115



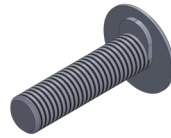
Diametro > Comprimento v	1/4"	5/16"	3/8"	1/2"
3000mm	✓	✓	✓	✓
6000mm	✓	✓	✓	✓

PARAFUSO CABEÇA REDONDA COM FENDA SIMPLES  
MOD.: 9.100



Diametro > Comprimento v	3/16"	1/4"	5/16"	3/8"
1/4"	✓			
3/8"	✓			
1/2"	✓	✓	✓	
5/8"	✓	✓		✓
3/4"	✓	✓	✓	✓
1"	✓	✓		
1" 1/4	✓	✓		
1" 1/2	✓	✓		

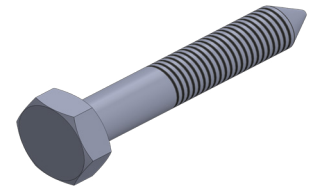
PARAFUSO LENTILHA AUTO TRAVANTE  
MOD.: 9.102



Diametro > Comprimento v	1/4" *	5/16"	3/8"
1/2"*	✓	✓	✓
5/8"	✓	✓	✓
3/4"	✓	✓	✓
1"	✓	✓	✓

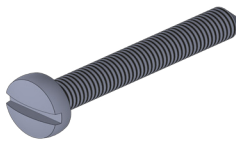
\*Tamanho recomendado para eletrocalhas SIB.

PARAFUSO SEXTAVADO ROSCA SOBERBA  
MOD.: 9.104



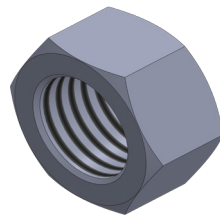
Diametro > Comprimento v	1/4"	5/16"	3/8"	Recomen- dado para buchas
1"3/4	✓			S8
2"		✓		S10
3"			✓	S12

PARAFUSO DE FENDA CABEÇA PANELA ROSCA SOBERBA  
MOD.: 9.105



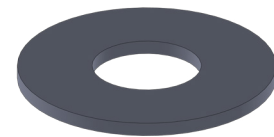
Diametro > Comprimento v	4,2	4,8	6,3	Recomen- dado para buchas
32	✓			S6
45		✓		S8
50			✓	S10

PORCA SEXTAVADA  
MOD.: 9.106



Dimensões disponíveis de 3/16", 1/4", 5/16", 3/8" e 1/2".

ARRUELA LISA  
MOD.: 9.107



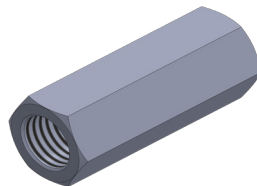
Dimensões disponíveis de 3/16", 1/4", 5/16", 3/8" e 1/2".

ARRUELA DE PRESSÃO  
MOD.: 9.108

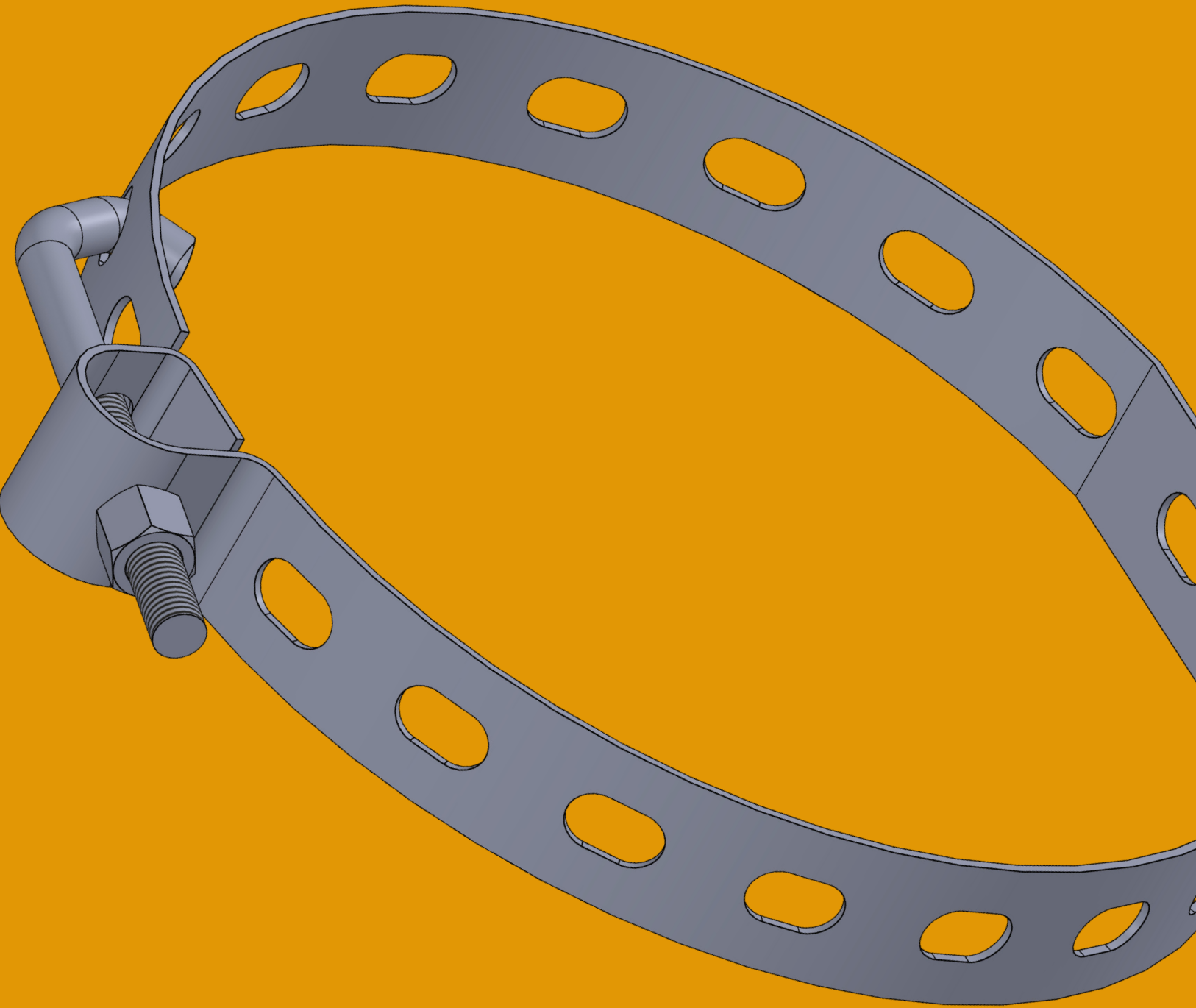


Dimensões disponíveis de 3/16", 1/4", 5/16", 3/8" e 1/2".

PROLONGADOR PARA SUSPENSÃO  
MOD.: 9.109



Diametro > Comprimento v	1/4"	5/16"	3/8"	1/2"
25mm	✓	✓	✓	✓
50mm	✓	✓	✓	✓



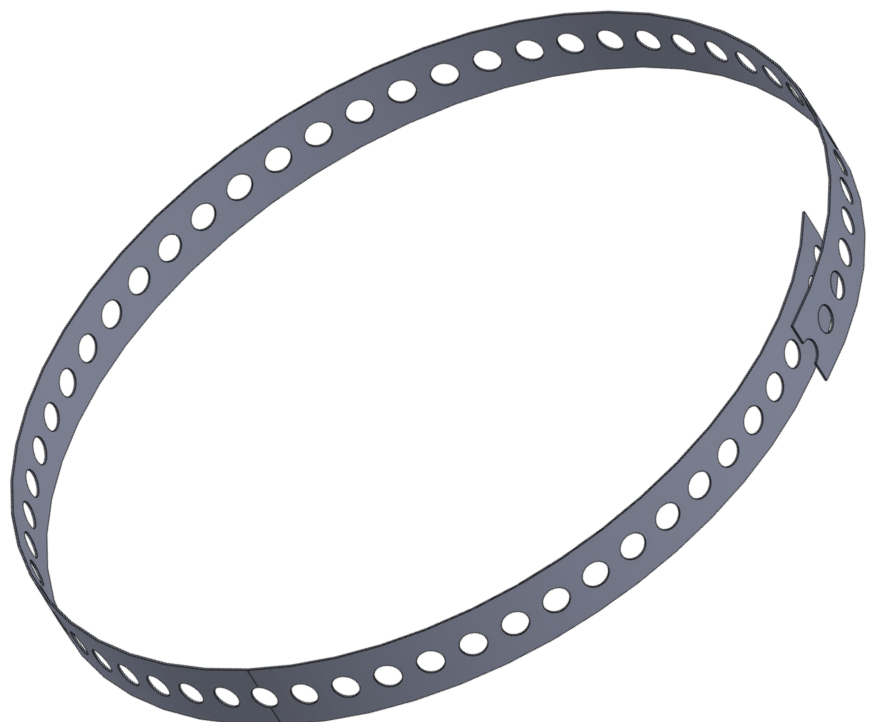
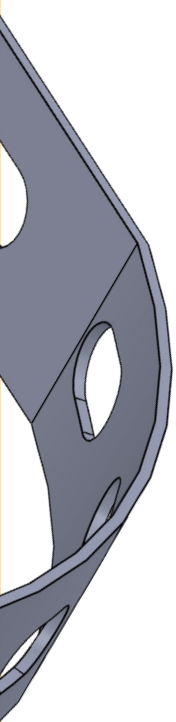
# FIXADORES

Fixadores são componentes mecânicos projetados para unir ou fixar objetos de forma segura e estável. As fitas metálicas são projetadas para atender às necessidades específicas de fixação, resistência e aplicação. Eles desempenham um papel fundamental em uma variedade de aplicações industriais, comerciais e domésticas, proporcionando uma conexão robusta entre peças e estruturas.

A escolha do modelo de fita metálica depende do material das superfícies a serem unidas, do ambiente de uso, das forças aplicadas e das exigências estéticas.

- Fita BAP é um acessório robusto desenvolvido para fixação segura de objetos em postes, incorporando um mecanismo de parafuso para instalação firme e estável.
- Fita Perfurada: fabricada em aço galvanizado ou inoxidável, possui perfurações que facilitam a fixação de elementos em construção civil e amarração de cargas.
- Fita Lisa: oferece uma superfície metálica plana e resistente, ideal para aplicações que exigem uma fixação firme e estética.

Todas as fitas metálicas são versáteis, duráveis e adequadas para diversas aplicações, desde iluminação pública e sinalização, até decoração e projetos industriais. Eles são essenciais para garantir a integridade estrutural, segurança e funcionalidade em diversas áreas, desde a construção civil e automotiva até a eletrônica e manutenção industrial.



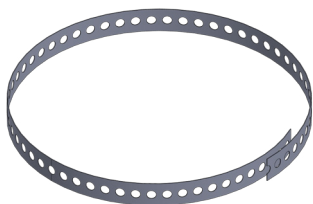
FITA BAP  
MOD.: 9.129



Modelo	Fita BAP 02	Fita BAP 03	Fita BAP 04
Comprimento útil	800mm	1200mm	1000mm
Nº de furos	22	33	24
Acessórios inclusos	01 Parafuso de tração 01 Porca de aperto	01 Parafuso de tração 01 Porca de aperto	01 Parafuso de tração 01 Porca de aperto
Acabamento	Pré zincado Galvanizado a fogo	Pré zincado Galvanizado a fogo	Pré zincado Galvanizado a fogo

Obs.: outras dimensões sob consulta.

FITA PERFURADA  
MOD.: 9.130



Modelo	Fita Perfurada 10m	Fita Perfurada 20m	Fita Perfurada 30m
Comprimento útil	10m	20m	30m
Acabamentos	Pré zincado	Pré zincado	Pré zincado

Obs.: outras dimensões sob consulta.

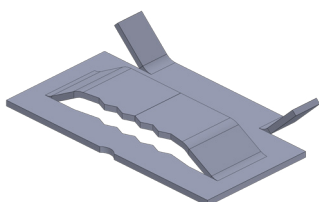
FITA LISA  
MOD.: 9.131



Modelo	Fita Lisa 10m	Fita Lisa 20m	Fita Lisa 30m
Comprimento útil	10m	20m	30m
Acessórios inclusos	01 Grampo serrilhado	01 Grampo serrilhado	01 Grampo serrilhado
Material	Inox 430	Inox 430	Inox 430

Obs.: outras dimensões sob consulta.

GRAMPO SERRILHADO  
MOD.: 9.132



Modelo	Grampo serrilhado
Material	Inox







© copyright 2024 Soluções Industriais do Brasil - Todos os direitos reservados.  
Versão 2

**SOLUÇÕES INDUSTRIAIS DO BRASIL**  
Av. Francisco de Paula Martins, 371  
Chácara Reunidas Anhanguera, Nova Odessa -SP  
CEP 13.388-682  
Telefone: +55 (19) 3516-3500  
E-mail: [comercial@sidobrasil.com.br](mailto:comercial@sidobrasil.com.br)





SI DO BRASIL  
**HUEHOCO** GROUP



HUEHOCO ACP DO BRASIL  
**HUEHOCO** GROUP